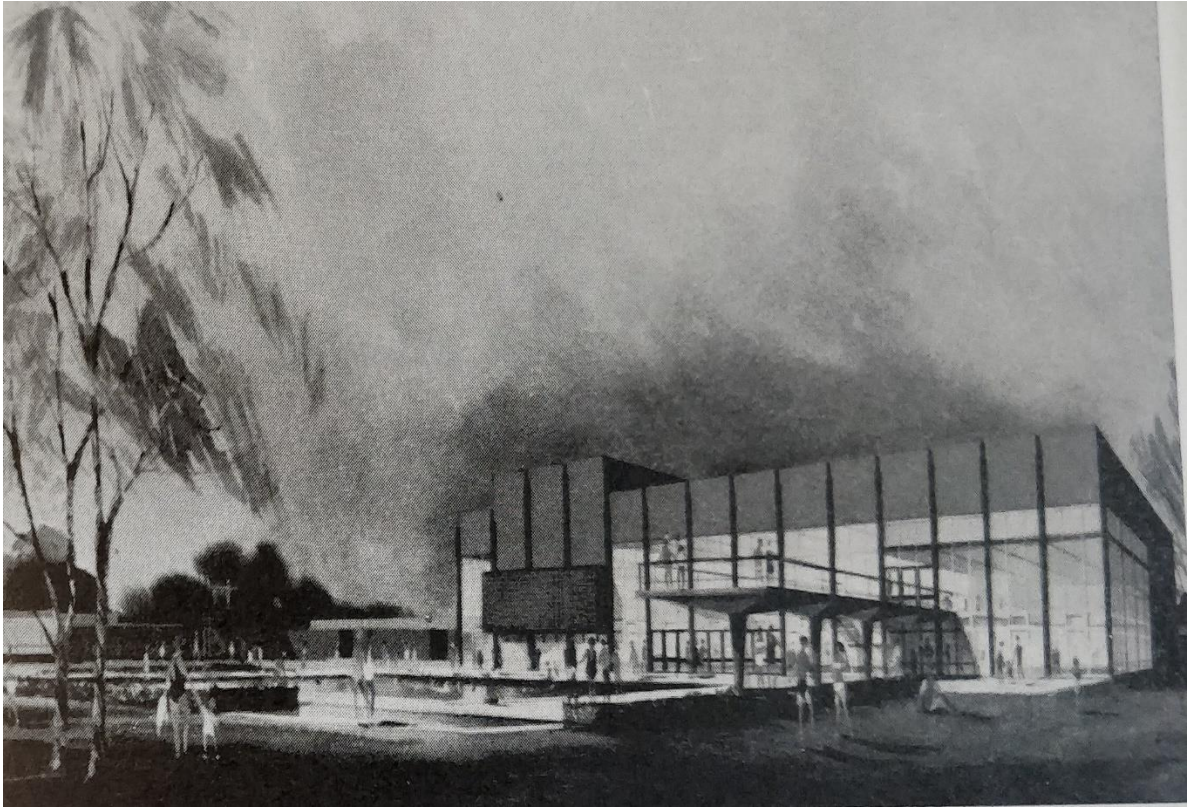


Statement of Significance: Richmond Public Baths, Old Deer Park, Richmond



(Source: London Borough of Richmond Upon Thames, 1966)

September 2017

JS Conservation Management
& Town Planning Ltd
t: 07741 091 719
e: john@jsconservationplanning.com
w: www.jsconservationplanning.com

Contents

List of Figures	3
Abbreviations Used	3
Definition of Words.....	3
Executive Summary.....	4
Section 1: Understanding the Heritage.....	4
Section 2: Statement of Significance.....	4
Section 3: Capacity for change.....	4
Introduction	5
The Statement of Significance.....	5
Aims.....	5
Methodology & Consultation.....	5
Limitations.....	5
Location.....	6
Section 1: Understanding the Heritage.....	8
Historical Overview	8
Section 2 – Statement of Significance	8
Historic Value	18
Aesthetic Value	18
Evidential Value.....	18
Communal Value	19
Section 3: Capacity for Change	20
Managing Change.....	20
Aims and objectives for conservation and new works.....	22
Significance and Capacity to Change Assessment.....	25
Overall Significance	36
Overall Capacity to Change	37
Appendices.....	38
Appendix 1 – Listing of the Richmond Public Baths	39
Appendix 2 – Statement of Significance detailed assessment.....	40
Historic Value	40
Aesthetic Value	42
Evidential Value.....	43
Communal Value	44
Glossary	45

Bibliography	46
Secondary References	46
Websites.....	47

List of Figures

Figure 1 – Richmond Upon Thames located within the city of Greater London.....	6
Figure 2 – OS map showing location of Richmond Public Paths, Richmond.....	7
Figure 3 – International examples of swimming pools built in the 1950's	9
Figure 4 – Examples of dwellings designed by Leslie Gooday.....	11
Figure 5 – The Ground Floor Plan of the Richmond Public Baths	12
Figure 6 – Civic Trust Award 1967	13
Figure 7 – Crystal Palace Sports Centre	13
Figure 8 – Coventry Leisure Centre	13
Figure 9 - Landscaping plans by Brown.....	13
Figure 10 - The South Elevation of the Richmond Public Baths.....	14
Figure 11 - 'The flumes' a waterslide park which was demolished during the 1990's.....	14
Figure 12 - Ground and First Floor Plans of the chosen Option B.....	15
Figure 13 – Chronology of the Richmond Public Baths	16
Figure 14 – Scale of Significance	17
Figure 15 – Principles and Approaches aims & objectives.....	22
Figure 16 – Conservation, Repair and Maintenance aims & objectives	23
Figure 17 – Aims & objectives for the protection of building fabric and collections.....	23
Figure 18 – Aims & objectives for the creation of an emergency or disaster plan.....	23
Figure 19 – Aims & objectives for building recording and monitoring	24
Figure 20 – Access and visitor services aims & objectives	24
Figure 21 – Site Management aims & objectives.....	24

Abbreviations Used

DDA	Disability and Discrimination Act 1995
ICOMOS	International Council of Monuments and Sites
NPPF	National Planning Policy Framework
NPPG	National Planning Practice Guidance
RIBA	Royal Institute of British Architects
RPB	Richmond Public Baths (also called Pools on the Park)

Definition of Words

This plan uses words which have specific and/or of a technical meaning in the context of Conservation Management. The Glossary defines these words; any other words are to the definition of the Oxford Dictionary

Executive Summary

This Statement of Significance concerns the Richmond Public Baths (RPB) located at Old Deer Park, Richmond (See Figure 4). The report is intended to enable a better understanding of the significance of the building which will assist in developing principles and policies to best manage any change, alterations and maintenance so that the significance of the building can be enjoyed by future generations.

In order to better understand the building, the Statement of Significance has been split into the following sections:

Section 1: Understanding the Heritage

Section 1 gives a detailed background of the RPB and sets a historical context for the building by chronologically documenting the major development, comparisons with similar buildings, alterations and the use of the building from its origins in discussions from the 1960's to the use and management of the building in today's climate.

Section 2: Statement of Significance

Section 2 undertakes an analysis of the components of the RPB to better understand the levels of significance in the building. The assessment of significance arises from a framework developed by English Heritage (now Historic England) which assesses the Evidential Value, Historic Value, Aesthetic Value and the Communal Value of the building (English Heritage 2008).

Section 3: Capacity for change

Section 3 undertakes an assessment of the various elements of the building based upon Sections 1 and 2, and develops aims and objectives for the conservation and management of the building and new works. The aims and objectives developed feed into the significance of the building and any new works which are based upon the significance of the individual elements of the building which are discussed in more detail in this section.

Introduction

The Statement of Significance

This Statement of Significance is based upon guidance published by English Heritage (now Historic England) titled '*Conservation Principles, Policies and Guidance 2008*.' The Statement of Significance brings together this guidance in order to assess the evidential, historic, communal and aesthetic values and any other values which may also be relevant. The Statement of Significance can then be used in order to develop a management plan for the building which will assist with maintenance and identifying which components of the building are more significant than others which allows any owner/occupier of the building to manage change towards the building and its setting.

Aims

The aims of the Statement of Significance for the RPB are as follows:

- To help guide the future layout, management, and conservation of the building;
- To write a Statement of Significance of the various components of the building which will enable better decisions regarding the conservation of the building to be made;
- To support applications for listed building consent and support any applications for future works requiring statutory consent;
- To support matched funding applications from the Heritage Lottery Fund as well as future funding opportunities as they arise;

Methodology & Consultation

The following methodology and consultation techniques were used in order to develop this Statement of Significance:

- Desk Based Assessment: Utilising mapping & GIS Data; gathering background research; photos and plans; visits to the Richmond Local Archives Office; and other relevant architectural libraries; research from books and newspaper articles which make reference to the building;
- Site Visits to the building to document the significance of the building and take photographic evidence of the building;

Limitations

Although general condition of the building and its fabric is noted, this is based purely upon a visual assessment and does not include any invasive surveys or surveys at height to determine condition, and is not meant to be read as a determination of the structure's structural condition which should be undertaken via a competent Structural Engineer experienced with listed buildings. Due to the nature of the building which is publicly accessible to children and adults, it was not possible to take an updated photographic inventory of all components of the building.

Location

The Richmond Public Baths (known as Pools in the Park) is located within the London Borough of Richmond Upon Thames, which is located to the south-west of the Greater London and is bounded by the London Boroughs of Wandsworth, Hammersmith and Fulham, Kingston upon Thames, Hounslow and the Borough of Elmbridge (See Figure 1).

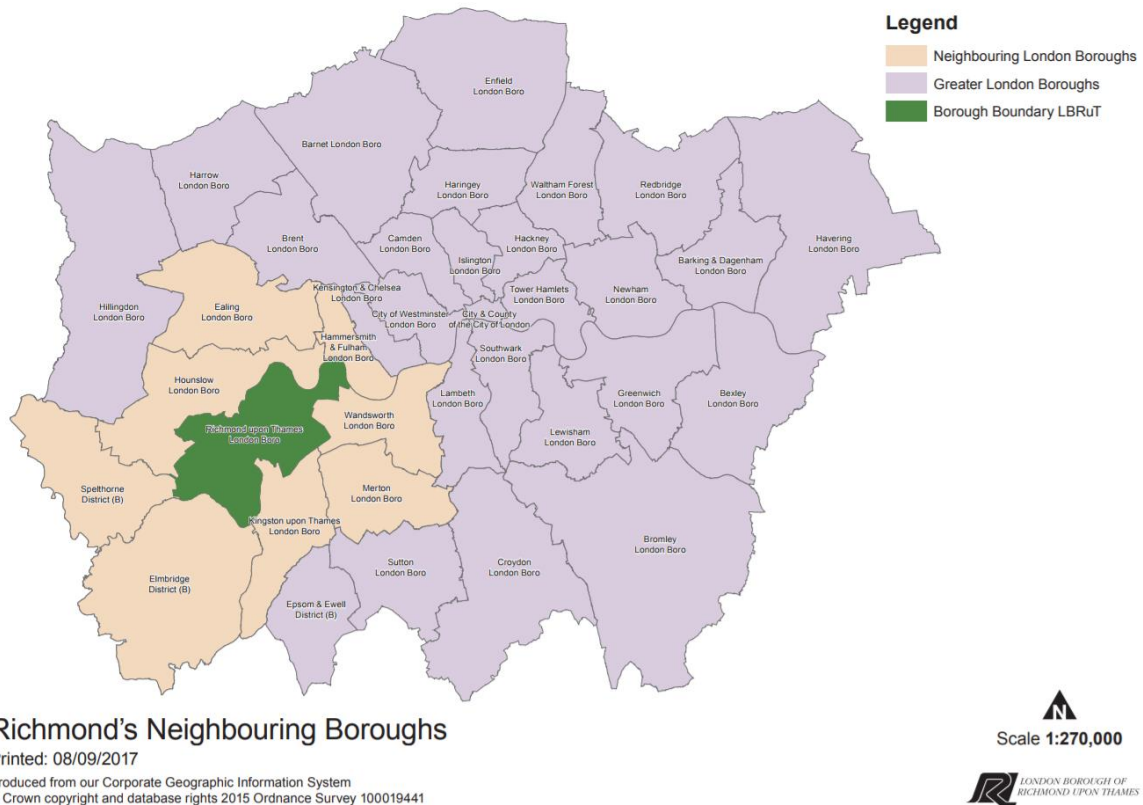
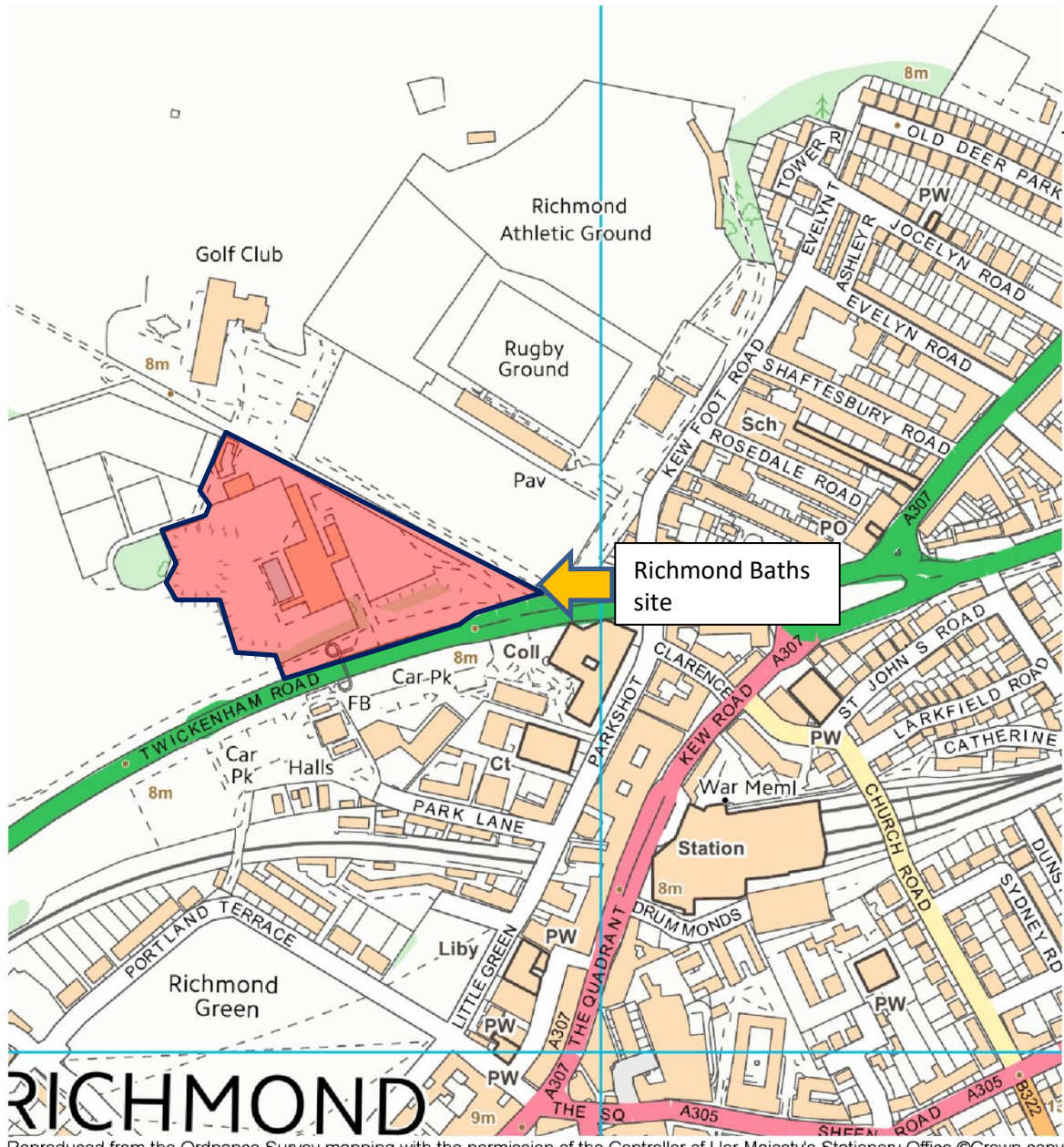


Figure 1 – Richmond Upon Thames located within the city of Greater London

The baths are located in the Old Deer Park, a further extension which together with the Royal Botanic Gardens at Kew is a historic park and garden which hosts a number of sporting clubs and activities such as rugby, cricket, football, golf, tennis, archery, and athletics. The parks also provides public open space and informal and passive recreational opportunities. The Richmond Baths are located to the south-west of the Richmond Athletic Association ground, north of Richmond Town Centre and central Richmond, and accessed off the Twickenham Road to the main car parking area (See Figure 2).

The Old Deer Park is much more 'built up' than the Royal Botanic Gardens to which the parkland adjoins as a result of associated infrastructure that supports the sporting and community activities of the Old Deer Park. The parkland is however very well vegetated, particularly around the boundaries of the site and continues the open, parkland setting which is a particular characteristic of the area.



Reproduced from the Ordnance Survey mapping with the permission of the Controller of Her Majesty's Stationery Office ©Crown copyright. Unauthorised reproduction infringes ©Crown copyright and may lead to prosecution or civil proceedings. Wandsworth Borough Council Licence No. LA 100019270 (2017)

Figure 2 – OS map showing location of Richmond Public Paths, Richmond.

Section 1: Understanding the Heritage

Historical Overview

The opening of a new swimming baths for Richmond came at a time when it was considered that the equipment, structure and machinery of the Parkshot Baths (Constructed 1891 and located nearby), which had reached the end of its life and required replacement facilities to cater for the growing needs of the population (London Borough of Richmond upon Thames, 1966).

The increasing awareness of councils in providing public leisure facilities will have also been influenced by a number of reports aimed at getting Britain back to its feet again after the war where government spending began to increase rebuilding and regeneration. In 1944 the Butler Education Act was published which set out that every child had the right to be taught to swim, with pools being provided by schools as well as by local councils (Harwood, 2015).

The Wolfenden Committee of Sport report was an independent committee set up in 1957 by the Central Council of Physical Recreation to *'recommend what action should be taken by statutory and voluntary bodies if games, sports and outdoor activities were to play their full part of promoting the general welfare of the community'* (The Central Council for Physical education, 1960, Foreword). This cultural shift towards the provision of public recreation and leisure facilities also came at a time when Britain was benefiting from post war spending as previously many Britons faced a tightening in government expenditure during the war. It was a time where now the government was urged to start re-building again and supplying investment into community facilities as part of this recovery. The aim of reports such as from the Wolfenden Committee of Sport was to empower local authorities to begin thinking about how they can best serve their local communities and increase the construction of sports and recreation facilities across Britain. The report also dealt with the need not just for sport, but for passive recreation, private bathing and spectator seating to be incorporated into facilities.

Given the need to embrace this changing time in not only 'imagery of rebuilding', and building strength and investment after the war, there was also a new vernacular of steel, concrete and glass which was beginning to make its place in modern architecture and engineering. The earlier examples of 1950-60's swimming pools were more experimental in their designs until the 1970's when designs became more standardised. Typically pools within the 1950's-60's period incorporated an indoor and outdoor pool, and spectator seating to one side with steel and large curtain walls of glass being utilised.

Fabian (1958) published a book at the time making an analysis of the most modern swimming pools of the day which featured the latest engineering advancement with large steel framed buildings with swathes of glass and concrete construction, with a variety of different indoor and outdoor pools for varying uses and swimming proficiencies. A number of examples from around the world which have similar experimentation of new materials and vernacular as the Richmond Baths can be seen in Figure 3 at Melbourne, Australia, Mexico City, and Germany.





	
<p>Melbourne Olympic Park Pools, Melbourne, Australia. Opened 1956. (Source: www.flickr.com)</p>	<p>Alberca Olímpica Francisco Márquez, Mexico City (Source: www.wikipedia.org)</p>
	
<p>Swimming Baths, Wuppertal, Germany. Opened 1957. (Source: https://www.kulturreise-ideen.de)</p>	<p>Swimming Baths, Bremen, Germany. Opened 1956 (Source: https://www.bremerhaven.de)</p>

Figure 3 – International examples of swimming pools built in the 1950's

Spurred on by local support and a referendum held in 1959, the Borough Council went about developing a pool which would not only have the most modern facilities in order to cater for the community, but reflect the important position which the landscape plays in the building with the building situated in the Old Deer Park, a valued open space and park and garden.

A Richmond Baths Committee was formed which was made up of Councillors and Officers and set about looking at other examples from around Europe and took a team of people which consisted of Cllr Alcock, Chair of the Richmond Baths Sub-committee; the deputy Town Clerk; the Borough

Engineer; the Borough Treasurer; the Baths Superintendent; an Architect and his assistant on a trip to Holland to meet with Dr. J. A. C. Bierenbroodspot, Director of bathing places in Holland in order to discuss a new Swimming Baths for Richmond (Richmond and Twickenham Times, 1959d).

The designs of the Baths were changed as a result of this trip to Holland, with one of the main considerations being the catering for the disabled population, which was seen as quite forward thinking at the time. It is for this reason that the centre was originally designed with all publicly accessible rooms and infrastructure situated at ground level, with the entire ground floor being a level surface.

A leading local architect of the modern era Leslie Gooday OBE, was commissioned to undertake the designing of the new state of the art facility with the Borough Council’s engineer Stanley Weddle. Gooday’s firm were responsible for many prestigious design projects, such as assisting Hugh Casson with the festival of Britain 1951, and also the Japan World Exposition in Osaka. Many of Gooday’s works were undertaken locally around the Surrey and London areas and involved very modern vernacular such as steel framed, larger glazing and copper roofing, which were to influence the design and materials found in the RPB (See Figure 4). Gooday not only designed houses, but also designed further swimming baths such as at Teddington (Harwood, 2015).

	
<p>Long Wall, Surrey 1962 (Grade II) Source: www.rightmove.co.uk</p>	<p>Ham Farm Road, East Sheen 1959</p>



Figure 4 – Examples of dwellings designed by Leslie Gooday.

Gooday was supported by a prominent landscape architect of the time, Michael Brown, considered to be a leader in his field, who was responsible for assisting the building to integrate with its surrounding landscape. Brown helped design the landscaped settings of a number of public housing estates such as working with Eric Lyons and the development of span housing in Twickenham, to the masterplan for the Redditch new town in the 1960's (www.independent.co.uk).

Planning permission was granted in 1963 and construction of the RPB soon commenced. The RPB was opened at 2:30pm on Saturday 25th June 1966 by the Right Honourable Lord Hill of Luton (London Borough of Richmond Upon Thames, 1966). The main contractor for the building of the site was W.J. Marston and Son Ltd and cost an estimated £227,000. Originally the site was designed to cater for up to 1,600 people within the building and amongst sun bathing areas; a national sized indoor and outdoor main pool, each measuring 110ft x 42ft, a paddling pool; a learners pool; a terrace and seating area catering for 200 persons, 24 private slipper baths, admin areas for the baths department, a waterslide park, and a residential flat for the caretaker (Figure 5 indicates the layout of the site) (London Borough of Richmond Upon Thames, 1966).

To the north of the site, a single storey group of buildings for the parks department were also created, which also incorporated changing facilities for the bowling green and sports courts opposite. These buildings were also completed in the same brick as the RPB and incorporated copper roofing, but did not exhibit the same elegant design at the main component of the swimming baths.

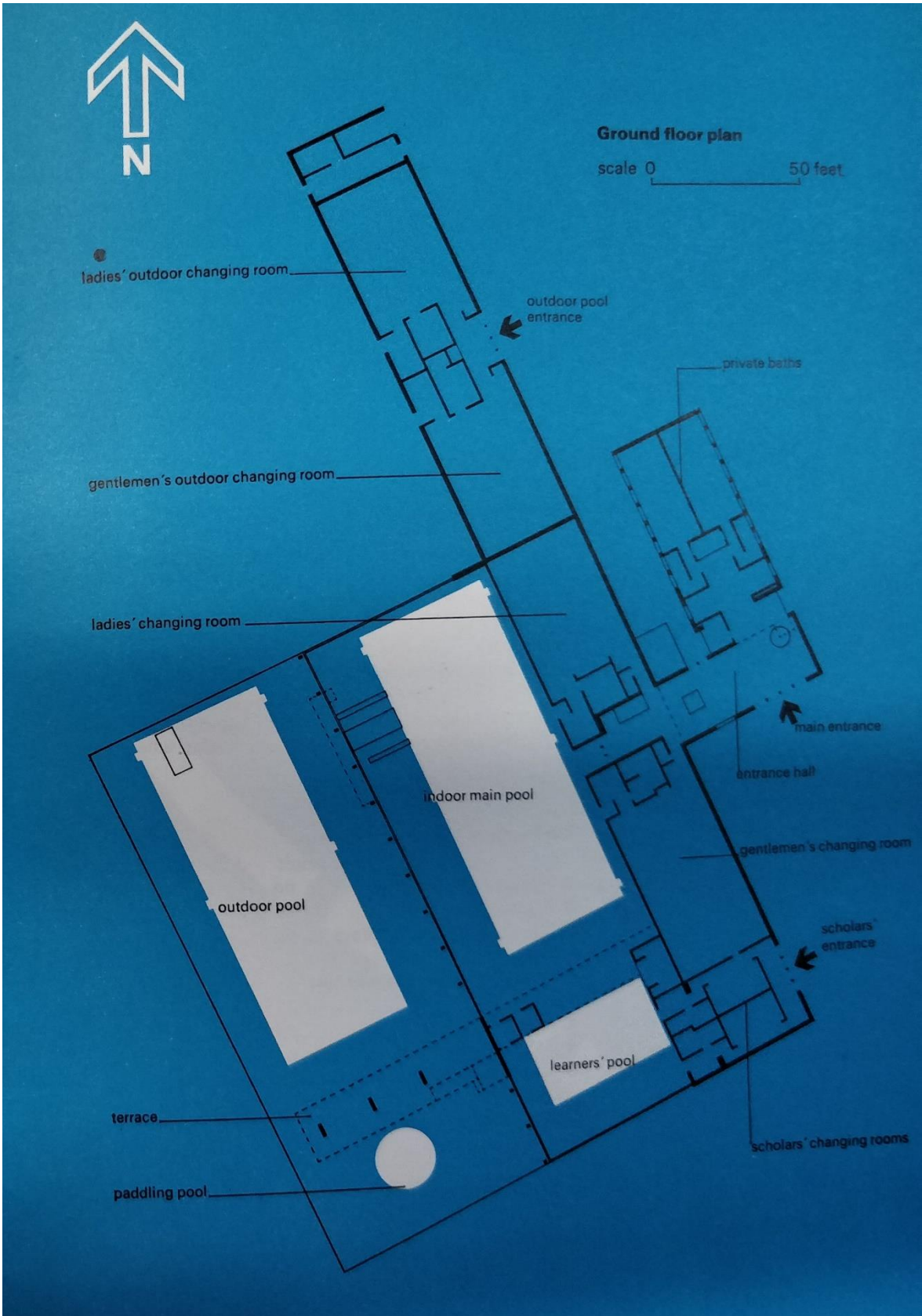


Figure 5 – The Ground Floor Plan of the Richmond Public Baths (Source: London Borough of Richmond Upon Thames 1966)

A year after the opening, the RPB was awarded a Civic Trust award for the exemplary design and how the building seamlessly integrated with the surrounding landscape

<https://www.civitrustawards.org.uk/benet/schemes/richmond-baths>.

Although a number of public bathing facilities were constructed across Britain from 1960-1966, only a few were designed to such high quality form, materials and appearance. Other notable examples within the UK

include the Coventry Public Baths (now leisure centre), and Crystal Palace Sports Centre. Both Coventry and Crystal Palace swimming pools were constructed with large steel framing with glass curtain walls, which exemplify the modern vernacular of the period which centred upon sun worship, open spaces, leisure and the outdoors (Worpole, 2000). The Crystal Palace Sports Centre is listed Grade II* and the Coventry Public Baths is also Grade II listed as a building of national architectural and historic importance.



Figure 6 – Civic Trust Award 1967 (Source: The Author)



Figure 7 – Crystal Palace Sports Centre (Source: www.geograph.co.uk)



Figure 8 – Coventry Leisure Centre (Photo taken by the Author)

What makes the RPB unique is that rather than being designed for an urban context, the building was designed specifically to fit in with the natural environment with the landscape playing a key role to its setting amongst the Old Deer Park. Plans by Michael Brown show how this was a key consideration in the final designs of the project.



Figure 9 - Landscaping plans by Brown showing the planting scheme to integrate the pool into the environment, (Source: Brown, 1963)

The building also incorporates large swathes of glass curtain walls, steel, concrete and copper roofing which is also a very fine example of 1960's vernacular, only seen in a handful of swimming baths constructed during the 1960's.

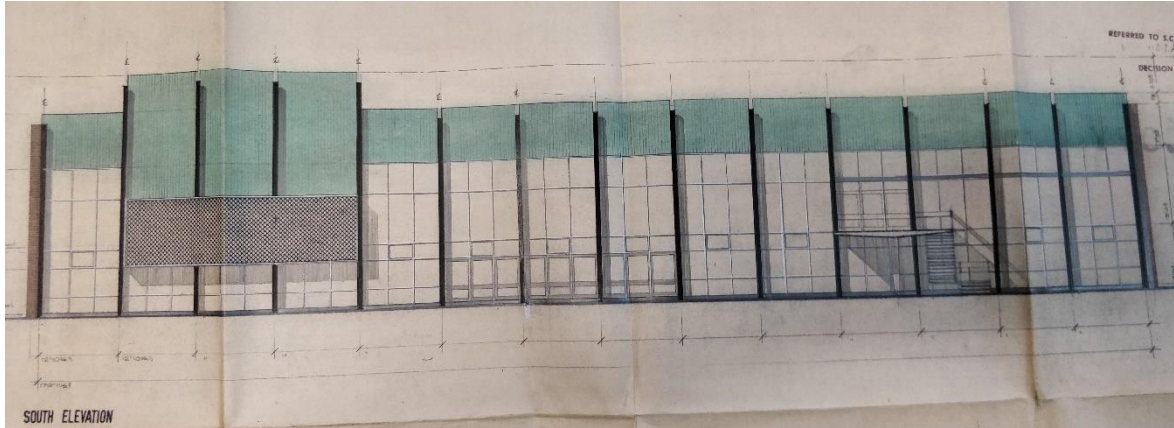


Figure 10 - The South Elevation of the Richmond Public Baths. (Source: Gooday, 1963)

The building was to cater for the community until the 1990's when issues arose regarding the building's structural integrity and the need to provide further facilities such as health and fitness to not only make the centre more viable, but to support its increased running costs. A public consultation was held to decide on four options, each option resulting in the removal of the Waterslide Park, called 'the flumes' (Figure 11)

The options raised were as follows:

- Option A: Simple refurbishment with no commercial interest/ involvement;
- Option B: Refurbishment with increased facilities, which involved a commercial partner, modern changing facilities, health and fitness suite, sauna, weights room, dance studio and café;
- Option C: Same as Option B, plus a ten pin bowling complex situated on the Waterslide site with 24-26 lanes with extra catering facilities and bar;
- Option D: Same as option B, plus a multi-purpose sports hall on the Waterslide site



Figure 11 - 'The flumes' a waterslide park which was demolished during the 1990's refurbishment. (Source: Prescott, 1992)

which includes four badminton courts, three squash courts, multifunction room and additional changing area. (London Borough of Richmond Upon Thames 1992a)

The successful option approved by the Council was Option B, which meant the refurbishment of the pool buildings alongside a corporate partner Whitewater PLC. The scheme did not include any major extensions, but rather altered the entire internal layout of the building, including the use of the first floor for public access for the first time; the removal of the spiral staircase and substantial alteration to the large atrium to the entrance hall with a mezzanine, the relocation of the changing room area, the conversion of this area to a café, and the incorporation of ancillary fitness to make the building into more of a leisure centre with weight rooms and fitness studios.

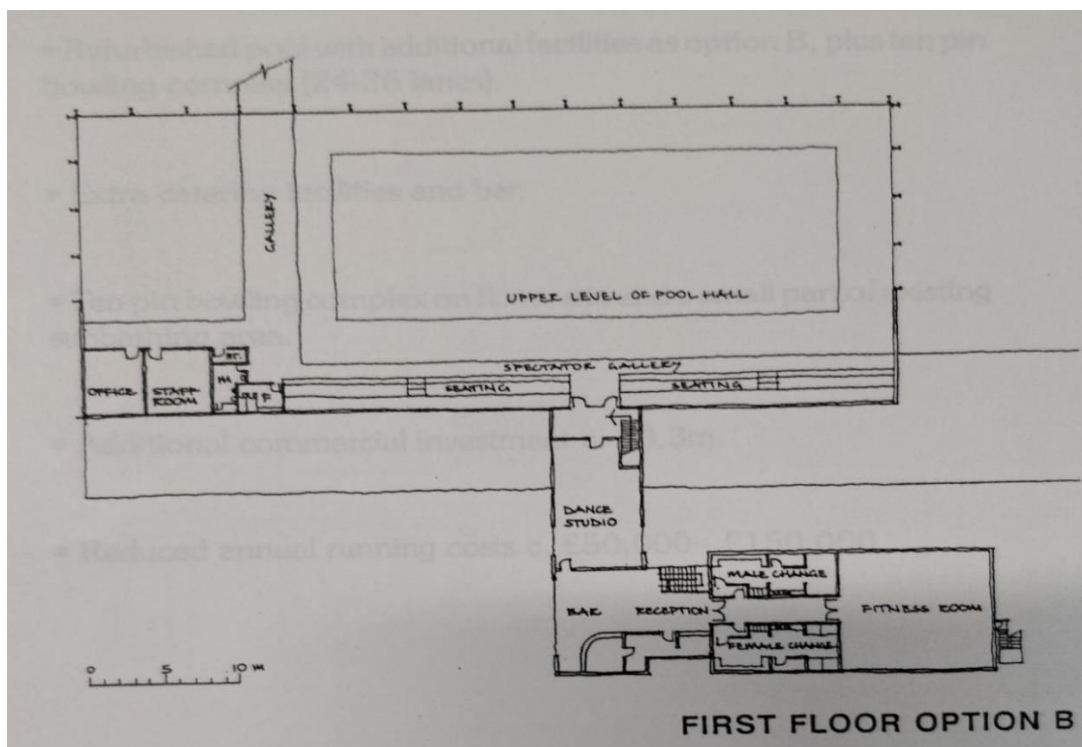
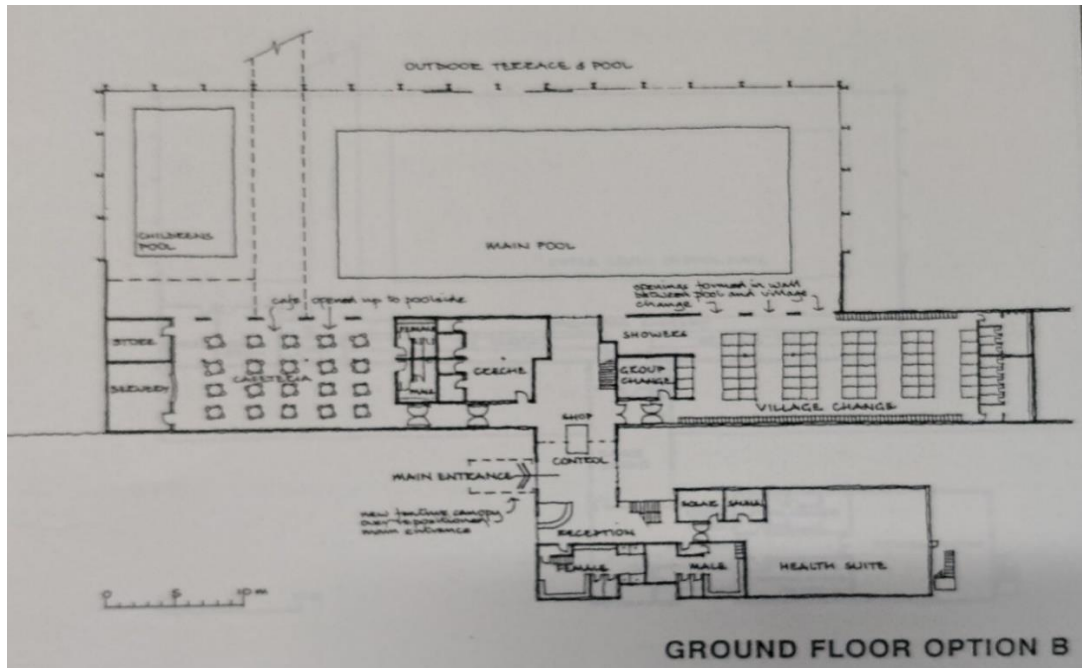


Figure 12 - Ground and First Floor Plans of the chosen Option B (Source: London Borough of Richmond Upon Thames 1992)

Today, the RPB has not been altered substantially and still generally represents the floor layout and plan of the 1992 period when the building was substantially altered. The original flooring of the changing rooms (now café) remains intact, as does the ceilings, all swimming pools, and balconies. Much of the external appearance still exhibits the original detailing, with only some minor alterations to the rear with the installation of flues etc. According to Gordon and Inglis (2009) there were 197 swimming pools constructed in England from 1945-1970, with 55 closing down by 2008 and other 30 expected to close down by 2015. The majority of the remaining pools have been refurbished to a degree which affects their significance. This is one of the reasons why the Richmond Public Baths remains a rarity and a unique building of its time.

The following chronology in Figure 13 below details the main events occurring to the RPB:

Key dates in the development of the Richmond Public Baths	
1959	Richmond Rotary Club stimulate public opinion on the need for an athletics track and swimming baths in order to pressure the Borough Council to make provision. A referendum is held with 2,264 in favour and 154 against (Richmond and Twickenham Times, 1959b).
July 1959	Richmond Council unanimously approves the principle of erecting a new public baths in Old Deer Park (Richmond and Twickenham Times, 1959c)
January 1960	Cllr Alcock, deputy Town Clerk, the Borough Engineer, the Borough Treasurer, the Baths Superintendent, an Architect and his assistant travel to Holland to meet with Dr. J. A. C. Bierenbroodspot, Director of bathing places in Holland in order to discuss a new Baths for Richmond. (Richmond and Twickenham Times, 1959d)
1961	Surrey Planning Committee approves plans for the baths (Thames Valley Times, 1961)
1962	Construction commences
1966	The baths are opened by the Right Honorary Lord of Luton (London Borough of Richmond Upon Thames, 1966)
1967	Richmond Baths is awarded a Civic Trusts Award for architecture with "This group of buildings of distinction unusual for its type, and extremely well related to its natural setting next to the Old Deer Park." (www.civitrustawards.co.uk)
1989	The centre is closed due to asbestos leaking into the pool from a leak from the plant room. All asbestos is then removed from the building. (Richmond and Twickenham Gazette 1989)
1990	The London Borough of Richmond Upon Thames undertakes a structural survey of the facilities, indicating that major refurbishment of the building should be carried out as soon as possible. (London Borough Upon Richmond Upon Thames 1992b)
19/02/92 – 15/03/92	The Richmond Borough Council launch a public consultation on four options for the refurbishment of the Richmond baths (London Borough of Richmond Upon Thames 1992a)
1992	Richmond Baths closes for 9 months to undergo £2.4 million refurbishment, with a partnership with Whitewater PLC. (Surrey Comet 1992)
January 1996	The Richmond Baths are listed as Grade II by English Heritage (now Historic England) as a building of national architectural and historic importance.
2004	Planning permission gained for refurbishment which included the retiling/restoration of pool areas.

Figure 13 – Chronology of the Richmond Public Baths

Section 2 – Statement of Significance

As detailed in Appendix 1 the entire RPB was listed as a building of special architectural interest in 1996 at Grade II, with the list description referring to the ‘elegant design’ of the building and its integration with the landscape. This section outlines the overall significance of the building by looking at the heritage values which contribute to the overall significance such as the:

Historic Value: *the ways in which past people, events and aspects of life can be connected through a place to the present;*

Aesthetic Value: *the ways in which people draw sensory and intellectual stimulation from a place;*

Evidential Value: *the potential of a place to yield evidence about past human activity; and*

Communal Value: *the meanings of a place for people who relate to it, or for whom it figures in their collective experience or memory (English Heritage 2008:7)*

The tables below indicate the level of overall significance in accordance within the following definitions:

Scale of Significance

Symbol	Significance	Definition
IS	International Significance	The heritage value makes a contribution and/or influence at an international scale
NS	National Significance	The heritage value makes a contribution and/or influence at a scale generally to the United Kingdom
RS	Regional Significance	The heritage value makes a contribution and/or influence at a regional scale of the South-East of England, Greater London and/or surrounding counties
LS	Local Significance	The heritage value makes a contribution and/or influence at the local scale of Richmond Upon Thames
S	Neutral Significance	The heritage value is important but has not had any particular effect or influence at a wider than local scale.

Figure 14 – Scale of Significance

Historic Value

There are a number of elements of Historic value present within the RPB which add to its significance, of which a full assessment can be seen in Appendix 2. The building itself has historic value where the RPB came at a time when there was increasing pressure from the government to undertake provision of sports and leisure facilities with the rebuilding of Britain after the war. Although a number of public baths were constructed around this period of the 1950-60s, the RPB is one of a handful of early examples which utilise a revolutionary modern design before designs became more standardised in the 1970's. The designs of the pool also embraced site visits to Europe in order to develop a centre which was 'state of art' in terms of design and facilities offered which contain elements of the Crystal Palace baths and the Coventry Baths, also recognised as buildings of National importance. The RPB also has associations with leading architects of the time, such as Leslie Gooday who designed the building and Michael Brown, a leading landscape architect who designed the surrounds and which the RPB can be seen as one of their most exemplary works.

Aesthetic Value

There are a number of elements of Aesthetic value present within the RPB which add to its significance, of which a full assessment can be seen in Appendix 2. The public baths survive as a unique and largely intact building that exemplifies the modernist era of design and vernacular of public bath buildings in the early 1960's. The building utilises design considerations from abroad which places the building on an international level of significance amongst other examples of public baths which were also constructed at the time. This is complimented by the landscaped grassed areas which were not only designed for sun-bathing, but with trees and undulations in the topography, allowing the building to be better integrated into this garden setting with the Old Deer park which adjoins the Royal Botanic Gardens at Kew.

Evidential Value

There are a number of elements of Evidential value present within the RPB which add to its significance, of which a full assessment can be seen in Appendix 2. According to the Designation and Selection Guide – Sports and Recreation buildings, in order to be a listed building, *'a very lavish architectural or engineering display is required for post-war pools. These need structural ingenuity to be displayed, and the best will display innovative planning, structural engineering and a mix of two pools or a pool and space for dry sports, to justify listing. The juxtaposition of two large spaces makes for more interesting architectural and technical solutions.'* (English heritage 2011:9). Taking this into account, the RPB does exhibit these elements with a revolutionary design of large curtain glass walls, steel framing and a terrace which integrates all of the pools as well as the spectator seating designed to overlook both the indoor and outdoor pools. The building is not

only important for its engineering ingenuity, but also contains both indoor and outdoor pools and utilises design which takes advantages of the surrounding landscape.

Communal Value

There are a number of elements of Evidential value present within the RPB which add to its significance, of which a full assessment can be seen in Appendix 2. The building is of particular significance and rarity given that it is a purpose-built post-war building of exemplary design, which is largely intact and features both indoor and outdoor pools and has significant design outcomes and innovations for a building of its age that is comparable to other listed swimming pools of the time such as the Coventry Baths and Crystal Palace Sports Hall. The building represents the flagship leisure centre for the London Borough of Richmond Upon Thames and continues to benefit the community today as a centre of passive and active leisure and recreation. The baths therefore have a meaning of a place for people who relate to it, or for whom it figures in their collective experience or memory as a past or present user of the pool.

Section 3: Capacity for Change

Managing Change

The following section looks at each of the components which make up the swimming baths and surrounding site in order to analyse and develop a comprehensive way of identifying the scale of contribution each element has to the building's significance. This can be based upon a number of aspects, such as remaining historic fabric, alterations, intactness which then will influence the ability that the building has for change. There are a number of useful documents, policies and guidance available which should be utilised in order to develop principles for managing historic assets. Some examples of relevant documents are further explained below:

Planning (Listed Buildings and Conservation Areas) Act 1990

This Act governs decisions affecting listed buildings and conservation areas and Section 66 of the Act places a special duty upon decision makers to have special regard to the desirability of preserving a listed building or its setting or any features of special architectural or historic interest which it possesses.

National Planning Policy Framework (NPPF)

The National Planning Policy Framework places particular emphasis on heritage as one of the core planning principles to be considered in planning decisions. This principle seeks that decisions regarding the conservation of heritage assets are made in a manner appropriate to their significance so that they can be enjoyed for their contribution to the quality of life of this and future generations (NPPF, Para17)

In doing so, the Framework seeks the recognition of heritage assets as an irreplaceable resource and that the following points should be taken into consideration in decision making:

- *the desirability of sustaining and enhancing the significance of heritage assets and putting them to viable uses consistent with their conservation;*
- *the wider social, cultural, economic and environmental benefits that conservation of the historic environment can bring;*
- *the desirability of new development making a positive contribution to local character and distinctiveness; and*
- *opportunities to draw on the contribution made by the historic environment to the character of a place.* (NPPF Para 126)

National Planning Practice Guidance (NPPG)

The NPPG enables further guidance to be given to decision markers regarding the historic environment and particularly in relation to managing change to heritage assets. The guidance suggests that the decay of heritage assets are best addressed through ensuring that they remain in active use that is consistent with their conservation. Ensuring such heritage assets remain used and valued is likely to require sympathetic changes to be made from time to time. Where changes are proposed, the NPPF sets out a clear framework for both plan-making and decision-taking to ensure that heritage assets are conserved, and where appropriate enhanced, in a manner that is consistent with their significance and thereby achieving sustainable development. (NPPG Para: 003 Reference ID: 18a-003-20140306)

London Plan 2015

The London Plan sets out the priorities for planning within the Greater London Area, in which the London Borough of Richmond Upon Thames is situated within.

Policy 7.8 Heritage Assets and Archaeology

This policy seeks decisions regarding heritage assets to identify, value, conserve, restore, re-use and incorporate heritage assets, where appropriate. Where development affects heritage assets and their settings, development should conserve their significance, by being sympathetic to their form, scale, materials and architectural detail.

London Borough of Richmond Upon Thames Development Management Plan

The Local Plan (previously known as Local Development Framework) sets out the priorities for the development of the borough and will be used for making decisions on planning applications.

Policy DM OS 4 Historic Parks, Gardens and Landscapes

This policy seeks the protection and enhancement of registered parks and gardens and landscapes of special interest, including analysing the impact upon settings, views, and vistas to and from historic parks and gardens.

Policy DM HD 1 Conservation Areas - designation, protection and enhancement

This policy seeks proposals which conserve and enhance the character and appearance of conservation areas which takes into account impact to Buildings or parts of buildings, street furniture, trees and other features which make a positive contribution to a conservation area.

Policy DM HD 2 Conservation of Listed Buildings and Scheduled Ancient Monuments

This policy seeks to ensure that Listed Buildings of special architectural or historic interest and Ancient Monuments are kept in a good state of repair, and that any proposed works and alterations are undertaken on an accurate understanding of the significance of the asset including the structure, and respect the architectural character, historic fabric and detailing of the original building.

Historic England Planning Principles, Policies and Guidance 2008

Historic England is an executive non-departmental public body of the British Government which acts for Heritage matters on behalf of the Department for Culture, Media and Sport (DCMS). The planning principles, policies and guidance which were developed by Historic England are influenced and adapted through a number of international charters on the conservation, maintenance and preservation of the historic environment. The governing principles are as follows:

Principle 1: The historic environment is a shared resource

Principle 2: Everyone should be able to participate in sustaining the historic environment

Principle 3: Understanding the significance of places is vital

Principle 4: Significant places should be managed to sustain their values

Principle 5: Decisions about change must be reasonable, transparent and consistent

Principle 6: Documenting and learning from decisions is essential

The principles are key to managing change within the historic environment and particularly in relation to significance which can involve both tangible and intangible heritage values such as Historic Value, Aesthetic Value, Communal Value and Evidential Value.

International Council of Monuments and Sites (ICOMOS)

ICOMOS is a global non-government organisation which is dedicated to promoting the application of theory, methodology, and scientific techniques to the conservation of the architectural and archaeological heritage. They are responsible for the development of international charters, treaties, and conventions relating to the historic environment. Its work is based on the principles enshrined in the 1964 International Charter on the Conservation and Restoration of Monuments and Sites (the Venice Charter) which has been ratified by the UK along with a number of further

treaties, and charters. ICOMOS have developed principles for the analysis, conservation and structural restoration of architectural heritage is as follows:

- *Conservation, reinforcement and restoration of architectural heritage requires a multidisciplinary approach.*
- *Value and authenticity of architectural heritage cannot be based on fixed criteria because the respect due to all cultures also requires that its physical heritage be considered within the cultural context to which it belongs.*
- *The value of architectural heritage is not only in its appearance, but also in the integrity of all its components as a unique product of the specific building technology of its time. In particular the removal of the inner structures maintaining only the façades does not fit the conservation criteria.*
- *When any change of use or function is proposed, all the conservation requirements and safety conditions have to be carefully taken into account.*
- *Restoration of the structure in Architecture Heritage is not an end in itself but a means to an end, which is the building as a whole.*
- *The peculiarity of heritage structures, with their complex history, requires the organisation of studies and proposals in precise steps that are similar to those used in medicine - searches for significant data and information, individuation of the causes of damage and decay, choice of the remedial measures and control of the efficiency of the interventions.*
- *No action should be undertaken without having ascertained the achievable benefit and harm to the architectural heritage, except in cases where urgent safeguard measures are necessary to avoid the imminent collapse of the structures (e.g. after seismic damages); those urgent measures, however, should when possible avoid modifying the fabric in an irreversible way. (ICOMOS, 2003)*

In considering the relevant policies and guidance for the RPB, the following aims and objectives have been developed and need to be utilised in order to manage the significance of the RPB so that the building can continue to be adapted, experienced and utilised for future generations.

Aims and objectives for conservation and new works

- A Principles and approaches
- B Conservation, repair and maintenance
- C Protection of building fabric and collections
- D Emergency and disaster planning
- E Building recording and monitoring
- F Access and visitor services
- G Site management

Aims & Objectives	Principles and Approaches
A1	To place the significance and conservation of the RPB site and its setting at the heart of planning for the building’s future use and day to day management of the site.
A2	To secure the repair of the building and significant components of this heritage asset and provide for its future maintenance to high standards of conservation management.
A3	To promote public accessibility and an understanding and interpretation of the RPB site
A4	To manage the site in order to make best use of financial and other resources
A5	To ensure that the reduction of the building’s carbon footprint and impacts to climate change are key considerations in the management, maintenance and any new works to the building

Figure 15 – Principles and Approaches aims & objectives

Aims & Objectives	Conservation, Repair and Maintenance
B1	To ensure any repairs, maintenance or new works to the building are informed by a clear understanding of the significance of the heritage asset and that any new findings are fully documented and recorded.
B2	To ensure that any new works are carried out to a high standard, works need to be based upon an appropriate approach by specialised contractors with experience in conservation management of heritage assets
B3	To establish a proactive and regular cycle of maintenance and inspection of the building, including regular updating of the condition survey and maintenance report
B4	The findings of the condition survey and maintenance report should be undertaken by a contractor with experience of work on historic buildings
B5	Major repairs and alterations to the building should be monitored by appropriate conservation officers
B6	Listed Building Consent or advice (as appropriate) from the Conservation Team of the London Borough of Richmond Upon Thames Council will be undertaken before any works to the building
B7	Where significant fabric has to unavoidably be removed, it should be carefully recorded and the record placed within the local archive (Policy E1)
B8	Where historic fabric is to be removed or repaired, replacement should be, in as far as practicable, in the same material and method as those removed. New materials and methods may be used, however this must be argued on its merits, and all replacements and major new works shall be date stamped and recorded in the site archive (Policy E1).
B9	The significance of the elements to be restored should outweigh the significance of those elements of significance which would be lost.

Figure 16 – Conservation, Repair and Maintenance aims & objectives

Aims & Objectives	The protection of building fabric
C1	Any damage to walls (including fixtures), floors, and stairs should be repaired with a conservation approach, and utilise appropriate materials and repair methods to preserve the significance of the existing fabric.
C2	The fragile environment of the café area with its original mosaic tiles are of a fragile condition and should be protected during any works to the building.

Figure 17 – Aims & objectives for the protection of building fabric and collections

Aims & Objectives	Emergency and disaster planning
D1	To create a structured and orderly approach for an emergency situation and allow staff to respond in a timely manner should any incident take place
D2	A safety risk assessment should be regularly carried out which plans for the evacuation of staff and visitors as a priority
D3	Ensure signage is placed and maintained around the building (particularly in refuge areas) to guide public and staff on what to do in the case of a fire.
D4	To improve response times, fire drills and safe evacuation procedures should be regularly carried out
D5	Invite officers from the Fire Brigade and Police officers to regular site visits to familiarise themselves with the building in the case of an emergency

Figure 18 – Aims & objectives for the creation of an emergency or disaster plan

Aims & Objectives	Building recording and monitoring
E1	Maintain a formal archive to be held by the Richmond Local Archives Office which documents the building, and contains any plans, and details any interventions of the historic fabric of the building which will assist maintaining significance in any further works.
E2	Seek and document people’s recollections and experiences of the building and maintain in the formal archive (Policy E1)

Figure 19 – Aims & objectives for building recording and monitoring

Aims & Objectives	Access and visitor services
F1	Through a personal presence in the front foyer, encourage customers by illustrating the enjoyment and understanding of the significance of the building and invite and give clear direction to the services which the building offers
F2	Extend public access to significant areas of the building, where practicable by reinstating the main atrium of the building in order to better facilitate movement and direction from the foyer area to the services offered.
F3	Undertake regular reviews and develop disability awareness training for staff to minimise access constraints within the building
F4	Continue to engage and advertise the services of the building, particularly through the use of social media networks
F5	Undertake customer feedback surveys into the use, accessibility and experience of the building and its services, and address any concerns (if applicable)

Figure 20 – Access and visitor services aims & objectives

Aims & Objectives	Site Management
G1	That policy and procedures are put into place which place the protection and preservation of the significance of the building and its contents at the heart of any decisions or actions made to the building
G2	That any actions will meet the statutory and legal requirements for the protection of the site, and any requirements for health and safety and disability legislation
G3	Ensure that future management of the building safeguards the significance of the building and its historic integrity

Figure 21 – Site Management aims & objectives

Significance and Capacity to Change Assessment

Significance

The significance of the components of the building is based upon guidance from the Princes Regeneration Trust and is defined as the following:

	Exceptional – Nationally or internationally significant
	Considerable – Regional Significance
	Some – Local Significance
	Negative or Negligible – Negative or limited heritage value

Source (Princes Regeneration Trust 2009)

Capacity for Change

The Capacity of Change of the building is based upon guidance from the Princes Regeneration Trust and is defined as the following:

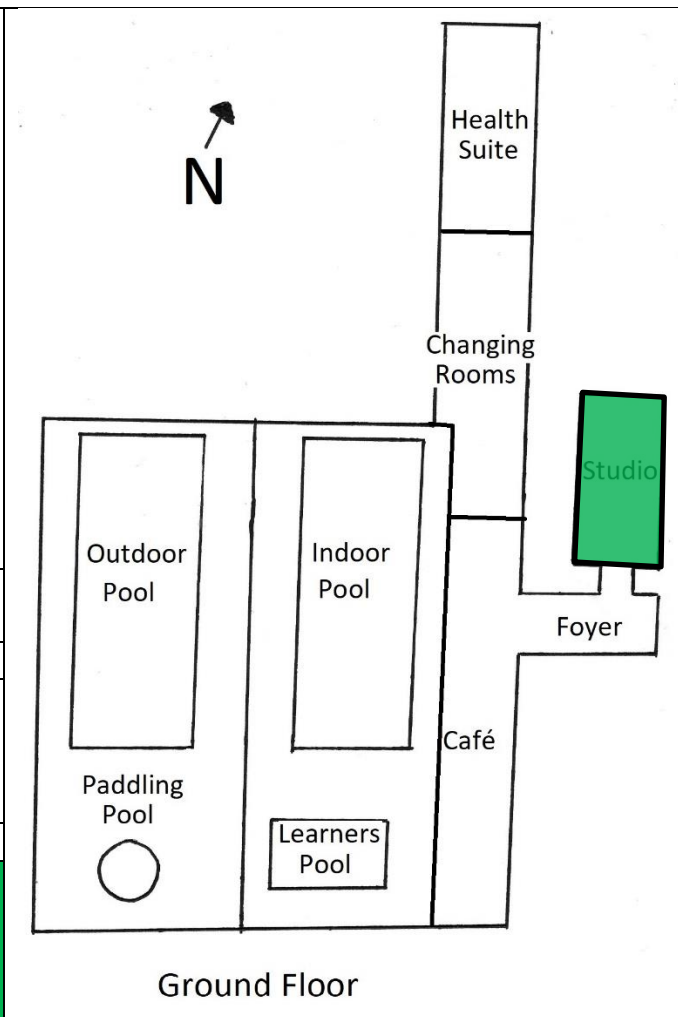
	Very low capacity for change	Highly fragile and very vulnerable to change and neglect. The building/area is only capable of accepting minimal interventions carried out with the greatest care if these avoid compromising the significance. A conservation approach is needed
	Low capacity for change	Vulnerable to change and neglect. The building/area is capable of accepting some changes if these avoid compromising the significance. A conservation approach is needed.
	Moderate capacity for change	Capable of accepting a number of changes without compromising the significance, The significance must inform the proposals.
	High capacity for change	Very major or major interventions possible without compromising the significance.

Source (Princes Regeneration Trust 2009)

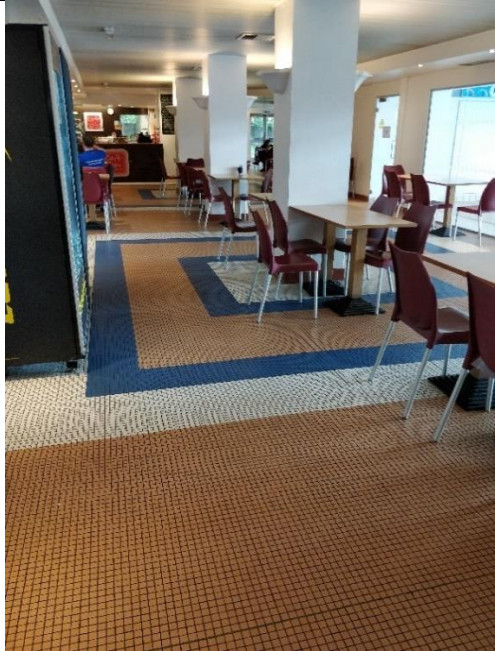
Please note that the following plans shown in this section are not to scale and are only indicative of the real-life situation.

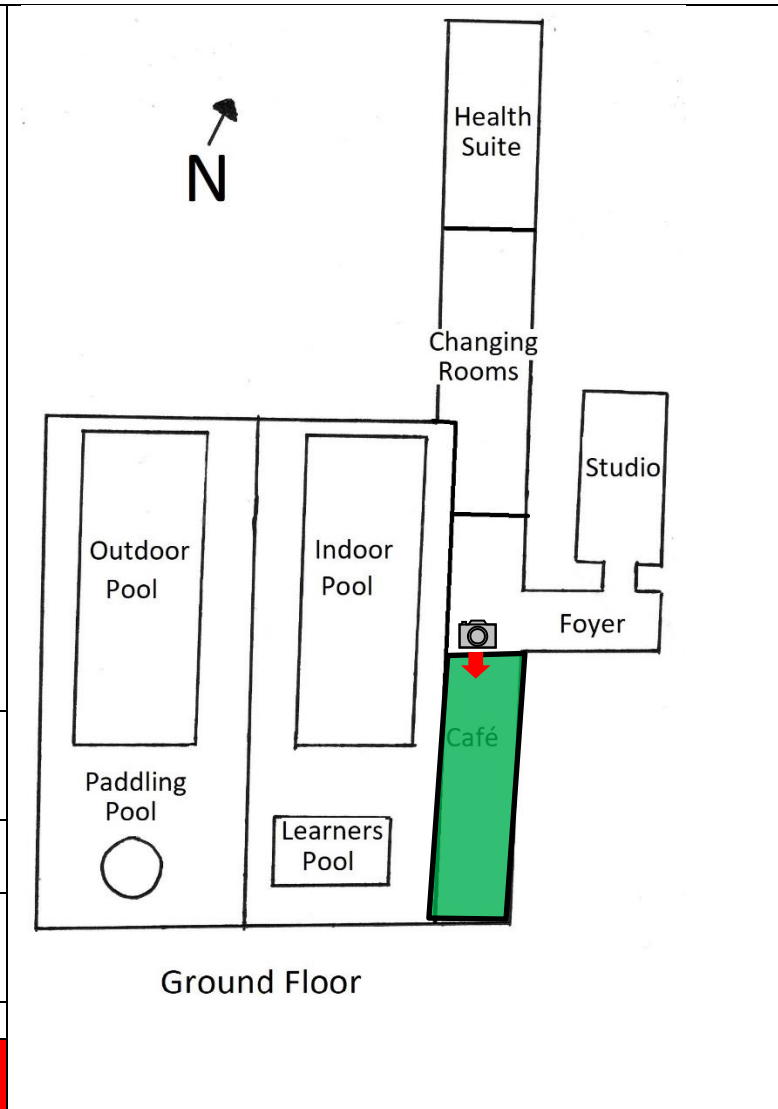
Asset No. 1 Front Entrance foyer		<p style="text-align: center;">Ground Floor</p>
Statutory Designation: <ul style="list-style-type: none"> • Grade II listed building • Old Deer Park Conservation Area • Grade I Registered Park and Garden • World Heritage Site Buffer Zone 		
Construction: 1966, altered 1992		
Uses: <ul style="list-style-type: none"> • 1966 - 1992: Main Atrium to Swimming pool. • 1992 – current: Main foyer/ reception, control room, toilets 		
Description: Formerly main entrance with entrance hall and atrium which was the height of the building. A mezzanine has now been inserted, spiral staircase removed, atrium removed, partitions inserted with walls and floors redecorated. The original main entrance was relocated further along the façade in 1992.		
Condition: Visually in good condition, however in need of decorating and refurbishment.		
Risks/ Recommendations: Major changes were undertaken in 1992 which have changed the configuration and circulation of the building from the main entrance. As a result there is an ability to alter this component without compromising the significance. Consideration should be given to reinstating the experience of the full height main atrium		
Significance	Capacity for Change	

Asset No. 2 Studio	
Statutory Designation:	
<ul style="list-style-type: none"> • Grade II listed building • Old Deer Park Conservation Area • Grade I Registered Park and Garden • World Heritage Site Buffer Zone 	
Construction: 1966, altered 1992 and 2004	
Uses:	
<ul style="list-style-type: none"> • 1966 - 1992: Private slipper bathing area • 1992 – current: Studio 	
Description: Wider and smaller corridor with facilities to the end, original glazing still in situ, false ceiling and new tiles to floor.	
Condition: Visually in fair condition, in need of refurbishment.	
Risks/ Recommendations: The corridor is original to the building, however is not of the same quality of design as the host building, however may be as a result of its more utilitarian and private nature as originally this area was for private bathing in slipper baths. Little historic fabric remains internally. There is a greater capacity of change in this area.	
Significance	Capacity for Change



Asset No. 3 Main Changing Area, Health Suite, office		<p style="text-align: center;">Ground Floor</p>
Statutory Designation: <ul style="list-style-type: none"> • Grade II listed building • Old Deer Park Conservation Area • Grade I Registered Park and Garden • World Heritage Site Buffer Zone 		
Construction: 1966, altered 1992, and 2004		
Uses: <ul style="list-style-type: none"> • 1966 - 1992: Entrance to outdoor pool and sunbathing area, changing rooms for outdoor pool • 1992 – current: Main changing room area and health suite 		
Description: changing room area which contains little historic fabric internally with the floor tiles being replaced and existing cubicles are no longer in situ. Original dividing walls which formerly segregated genders has been knocked through creating a large unisex changing area comprised of cubicles.		
Condition: Fair condition, in need of refurbishment.		
Risks/ Recommendations: Much of the internal space has been heavily altered, although does retain its historic use in a different configuration. The space is quite utilitarian and plain compared to the main pool area, however this may be a result of the hierarchy of these facilities which is much lower than the pool area. Some tiling remains to the walls, with ceiling replaced. As such, there is a greater capacity of change in this area.		
Significance	Capacity for Change	

Asset No. 4 Café Area	
Statutory Designation:	
<ul style="list-style-type: none"> • Grade II listed building • Old Deer Park Conservation Area • Grade I Registered Park and Garden • World Heritage Site Buffer Zone 	
Construction: 1966, altered in 1992	
Uses:	
<ul style="list-style-type: none"> • 1966 - 1992: Main changing area • 1992 – current: Cafe 	
 <p>(Source: The Author)</p>	
Description: Large open plan area which is used as a café. The room retains the original geometric patterned mosaic tiled floor and drainage channels which were once the main changing room area, as well as maintaining steel ceiling and wall decoration.	
Condition: Good condition with large proportions of elements of original historic fabric in situ.	
Risks/ Recommendations: The room has one of the few remaining intact finishes with ceiling walls and more importantly mosaic tiles intact. This room is quite significant and important to conserve and maintain with a conservation approach.	
Significance	Capacity for Change



Asset No. 5
Indoor Swimming Pool Area (Main swimming Pool and Learners pool)

- Statutory Designation:**
- Grade II listed building
 - Old Deer Park Conservation Area
 - Grade I Registered Park and Garden
 - World Heritage Site Buffer Zone

Construction: 1966, alterations in 1992 and 2004

- Uses:**
- 1966 - current: Indoor main swimming pool and learners pool.



(Source: www.richmond.gov.uk)

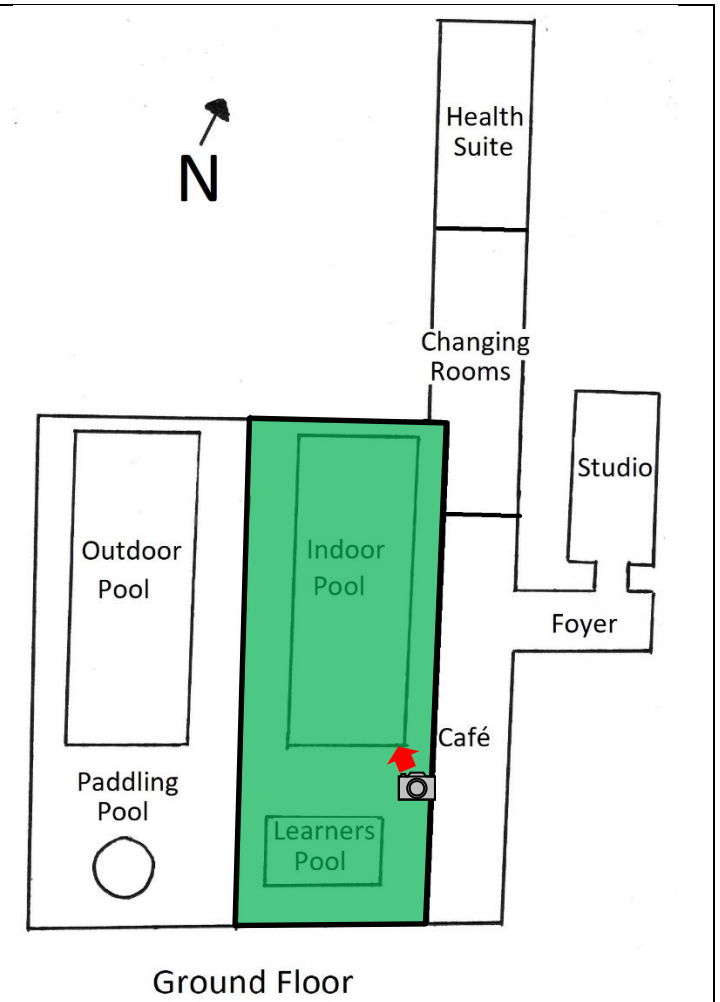
Description: Indoor pool area consisting of a learners pool (42ft x 24ft) and the main pool (110ft x 42ft). The room is a large full height space with large glazed curtain walling along 3 sides which looks out onto the outdoor pool and the landscaped sunbathing area beyond. The pools and surrounds have tiling which was replaced in 2004. Original diving boards have been removed and starter blocks are still in situ. The room is double height and maintains steel ceiling cladding. The Learners pool features filtered water which was seen as an advantage for teaching pupils in a prone or supine position and has an electrically heated warming bench along the southern wall which the warming function does not appear to still be in operation. The eastern wall of the learners pool is an original brickwork feature wall.

Condition: Good condition, however in need of some redecoration and restoration with a conservation approach.


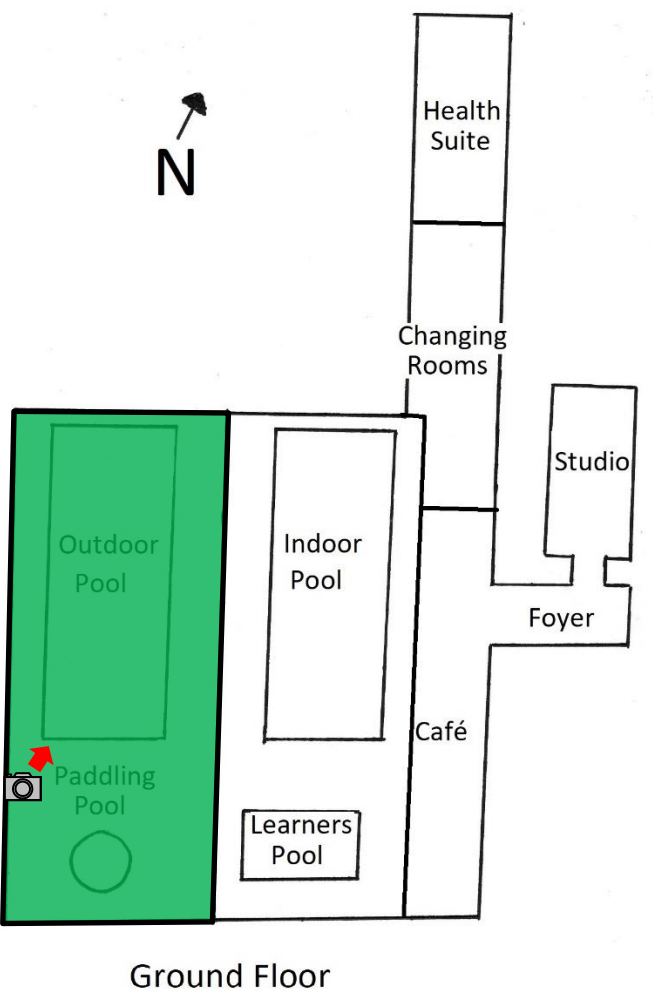
Risks/ Recommendations: The most significant component and centrepiece of the pools building and as such, it is highly fragile and its significance is very vulnerable to change. A Conservation approach should be adopted for any maintenance and repairs.

Significance


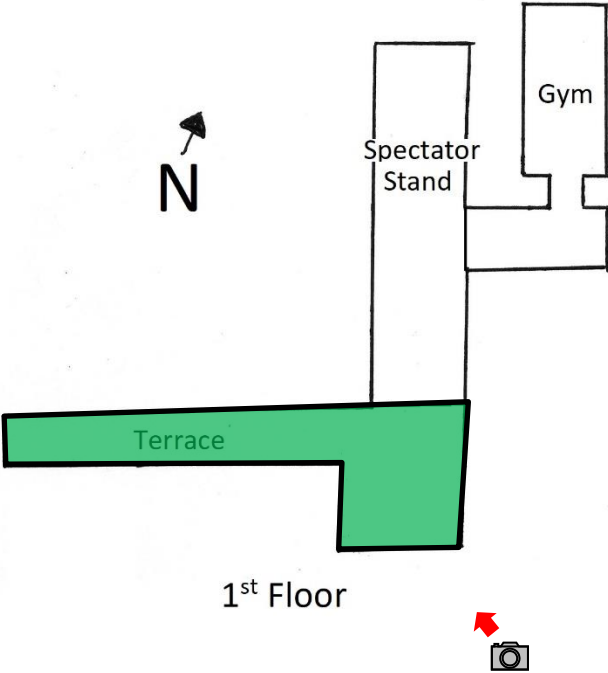
Capacity for Change

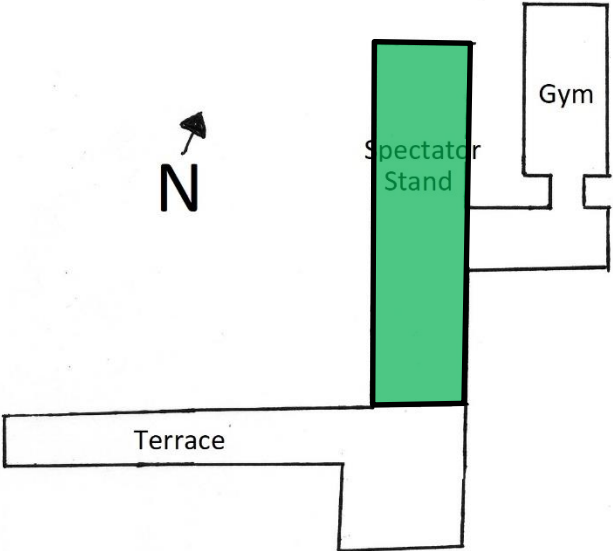


Ground Floor

<p>Asset No. 6 Outdoor Swimming Pool Area (Main outdoor pool and paddling pool)</p>		 <p>Ground Floor</p>
<p>Statutory Designation:</p> <ul style="list-style-type: none"> • Grade II listed building • Old Deer Park Conservation Area • Grade I Registered Park and Garden • World Heritage Site Buffer Zone 		
<p>Construction: 1966, alterations in 1992 and 2004.</p>	<p>(Source: https://twitter.com/poolsonthepark)</p>	
<p>Uses:</p> <ul style="list-style-type: none"> • 1966 - current: Outdoor swimming pool and paddling pool 		
<p>Description: Outdoor swimming pool the same size as the indoor swimming pool, tiled pool with tiled surrounds and water filled foot trough to prevent dirt and grass entering pool. This area was re-tiled in 2004. however original layout, historic fabric and appearance is still in-tact. Circular paddling pool is adjacent which retains original blue tiling.</p>		
<p>Condition: visually in fair – good condition, however would benefit from redecoration and restoration utilising a conservation approach.</p>		
<p>Risks/ Recommendations: The most significant component and centrepiece of the pools building and as such, it is high fragile and its significance is very vulnerable to change. A Conservation approach should be adopted for any maintenance and repairs.</p>		
<p>Significance</p>	<p>Capacity for Change</p>	

Asset No. 7 Sunbathing area		
Statutory Designation: <ul style="list-style-type: none"> • Grade II listed building • Old Deer Park Conservation Area • Grade I Registered Park and Garden • World Heritage Site Buffer Zone 	(Source: The Author)	
Construction: 1966		
Uses: <ul style="list-style-type: none"> • 1966 - 1992: sun bathing area 		
Description: Large landscaped grassed area surrounding the pool which is heavily vegetated and walled around the perimeter of the site. The sun bathing area provides the setting of the pool and follows the landscape designs of prominent landscape architect Michael Brown.		
Condition: Good condition		
Risks/ Recommendations: The landscaped grounds surrounding the site are very significant as they provide the setting of the Richmond Baths, however elements of the surrounding bathing area may be able to be altered without impacting upon the significance.		
Significance	Capacity for Change	
		

<p>Asset No. 8 Terrace above swimming pools</p>	 <p>(Source: https://twitter.com/poolsonthepark)</p>	
<p>Statutory Designation:</p> <ul style="list-style-type: none"> • Grade II listed building • Old Deer Park Conservation Area • Grade I Registered Park and Garden • World Heritage Site Buffer Zone 		
<p>Construction: 1966</p>		
<p>Uses:</p> <ul style="list-style-type: none"> • 1966 - current: Spectator terrace above indoor and outdoor pools. 		
<p>Description: Terrace which extends from the Spectator seating and allows views over the indoor pool, the learners pool, paddling pool and the outdoor pool. Concrete construction with steel railings, tiled floor replaced in 2004.</p>		
<p>Condition: Good condition however could benefit from redecoration.</p>		
<p>Risks/ Recommendations: The terrace is quite a rare installation and surviving element on pools built of this period and contributes significantly to the design and finish of the building. As such the significance of the terrace is highly fragile and very susceptible to change. A Conservation approach should be adopted for any maintenance and repairs.</p>		
<p>Significance</p>	<p>Capacity for Change</p>	

Asset No. 9 Spectator stand area		 <p>The diagram shows the 1st floor layout. A north arrow points towards the top-left. A green rectangular area is labeled 'Spectator Stand'. To its left is a horizontal rectangular area labeled 'Terrace'. To its right is a vertical rectangular area labeled 'Gym'. The entire area is labeled '1st Floor' at the bottom.</p>
Statutory Designation: <ul style="list-style-type: none"> • Grade II listed building • Old Deer Park Conservation Area • Grade I Registered Park and Garden • World Heritage Site Buffer Zone 		
Construction: 1966, altered 1992 and 2004.		
Uses: <ul style="list-style-type: none"> • 1966 - current: Main spectator stand to indoor swimming pool. 		
Description: The stand positioned along the eastern wall of the pool has 3 rows of carpeted spectator blocks (original seating removed) to the eastern side of the pool. Later round white handrail and glazed inserts installed.		
Condition: Good condition, however could do with further redecoration		
Risks/ Recommendations: Original spectator seating which embody the design of the time and recommendations from government regarding allowing people not only to play sport, but to watch it. The original fabric is highly vulnerable to change. A Conservation approach should be adopted for any maintenance and repairs.		
Significance	Capacity for Change	

Asset No. 10
Gym (Fitness suite/ weights room_

- Statutory Designation:**
- Grade II listed building
 - Old Deer Park Conservation Area
 - Grade I Registered Park and Garden
 - World Heritage Site Buffer Zone

Construction: 1966, altered 1992

- Uses:**
- 1966 - 1992: Caretakers apartment
 - 1992 – current: Fitness suite/ weight rooms, admin area



Source: <https://twitter.com/poolsonthepark>

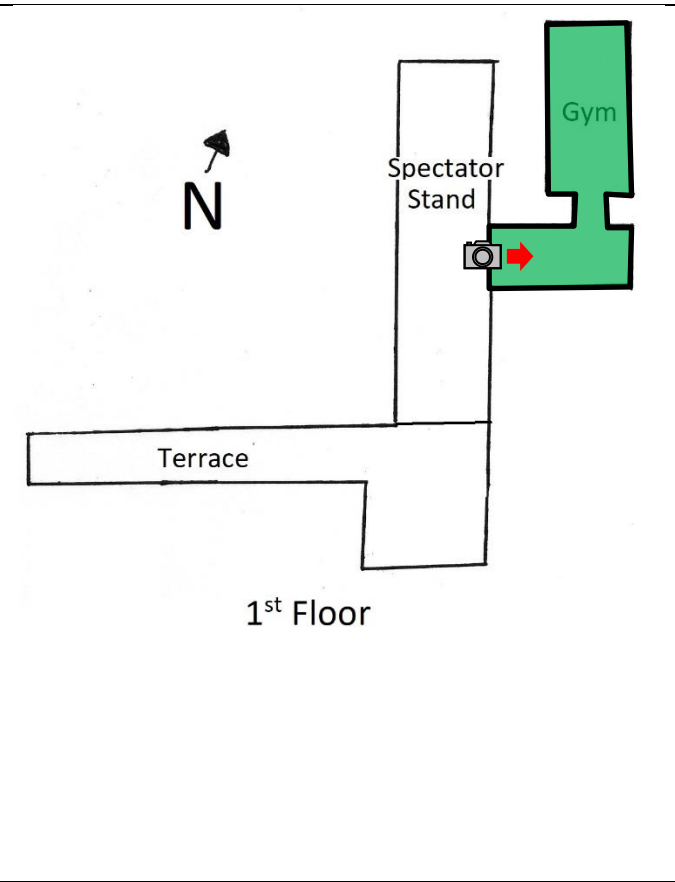
Description: Weight rooms and fitness suite which have false ceilings and later redecoration throughout. No evidence of caretakers flat remaining.

Condition: Good condition, however in need of redecoration.

Risks/ Recommendations: limited historic fabric remaining, this area is able to accept large changes without compromising the significance.

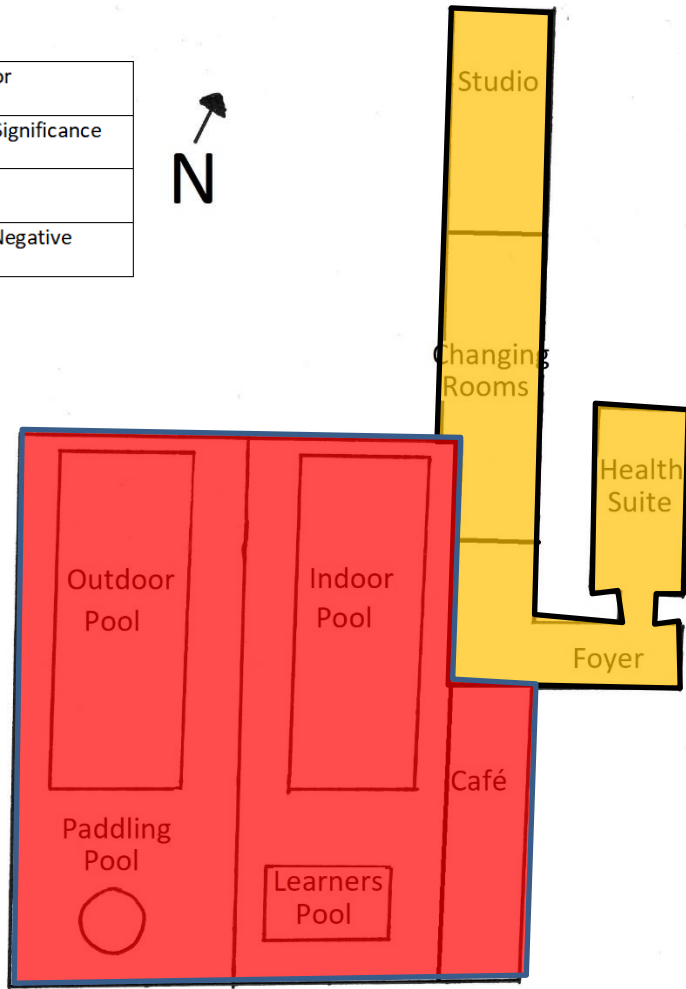
Significance

Capacity for Change

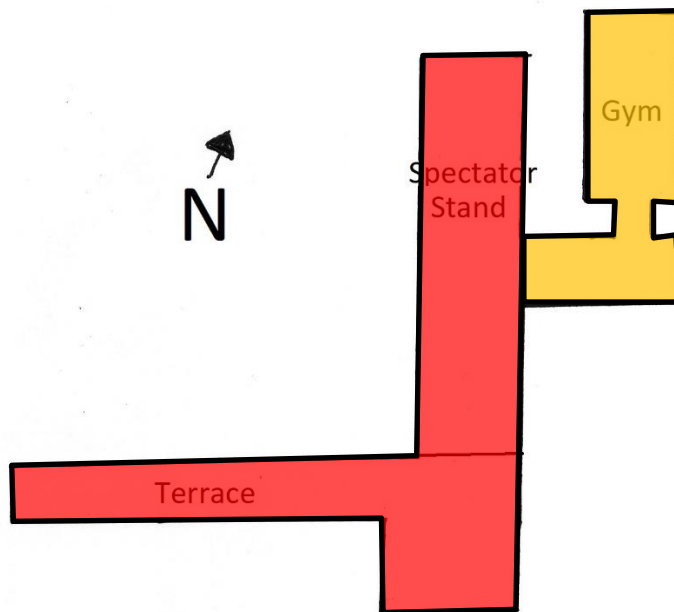


Overall Significance

	Exceptional – Nationally or internationally significant
	Considerable – Regional Significance
	Some – Local Significance
	Negative or Negligible – Negative or limited heritage value



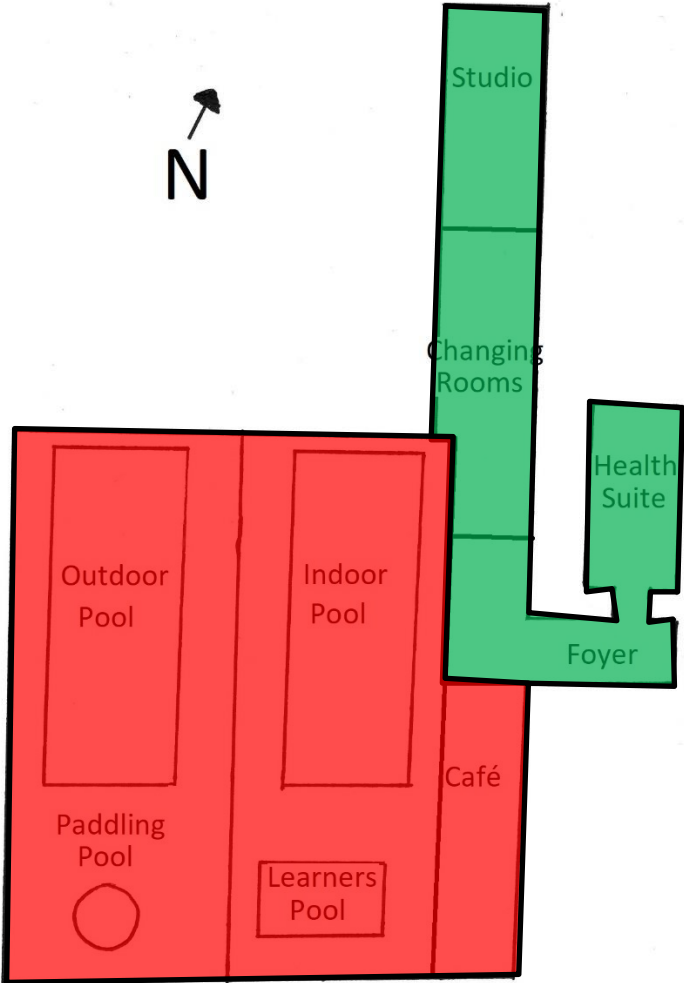
Ground Floor



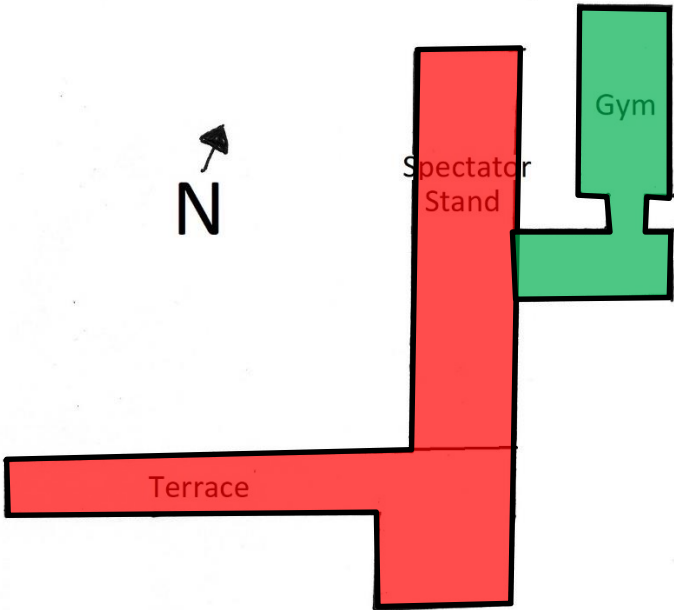
1st Floor

Overall Capacity to Change

	Very low capacity for change
	Low capacity for change
	Moderate capacity for change
	High capacity for change



Ground Floor



1st Floor

Appendices

Appendix 1 – Listing of the Richmond Public Baths

Appendix 2 – Statement of Significance Detailed Assessment

Appendix 1 – Listing of the Richmond Public Baths

Name: RICHMOND BATHS, OLD DEER PARK

List entry Number: 1246189

Location: RICHMOND BATHS, OLD DEER PARK, TWICKENHAM ROAD

County: Greater London Authority

District: Richmond upon Thames

District Type: London Borough

Grade: II

Date first listed: 16-Jan-1996

Date of most recent amendment: Not applicable to this List entry.

Details

TQ 1775 TWICKENHAM ROAD (north-west side) 22-/8/10037 Richmond Baths, Old Deer Park

GRADE II

Public swimming pools and lido. 1964-6 by Leslie Goodday with Stanley Weddle, engineer to Richmond UDC, later LB Richmond. Exposed steel frame of I-shaped section, expressed externally, clad in hand-made bricks, with three sides of pool hall largely glazed and with some slate hanging to entrance. Treated copper roof with deep eaves fascia is flat, but steps up over former diving area. 33.3 metre pool and learner pool in single hall facing south-west, with bank of spectator seating set over changing area, part now adapted as cafe area. Outside an open-air pool or lido is linked via steps which rise to sunbathing terrace that continues internally as a bridge; this makes a partial barrier between the two pools. Entrance in wing behind changing area with dance studio area; this separated treatment reduces the volume of the building seen from the Old Deer Park. 14-bay main facade fully glazed under deep fascia, with tripartite steel windows with single low transom that is a particularly elegant design and which continues on returns. The entrance elevation largely blank, with double doors set either side of slate hanging, which bears plaque to Civic Trust Award 1967. The pools and pool hall are clad in white and blue tiling, with some mosaic and some decorative brickwork to ends. The building is set in a walled enclosure designed as part of the original scheme, carried out with the same bricks and same attention to detail. This gives privacy to the sunbathing area and outdoor pool. Included as an exceptionally elegant municipal baths. Source: Architects' Journal, 1 November 1967.

Listing NGR: TQ1796075241

Appendix 2 – Statement of Significance detailed assessment

Scale of Significance

This section details the level of significance which for the building which is based upon personal experience, as well as referenced sources as shown. In each section each component of heritage value is given a level of significance, which is defined in the table below. The feature which is assessed is shown as underlined.

Symbol	Significance	Definition
IS	International Significance	The heritage value makes a contribution and influence at an international scale
NS	National Significance	The heritage value makes a contribution and influence at a scale generally to the United Kingdom
RS	Regional Significance	The heritage value makes a contribution and influence at a regional scale of the South-East of England, Greater London and/or surrounding counties
LS	Local Significance	The heritage value makes a contribution and influence at the local scale of Richmond Upon Thames
S	Neutral Significance	The heritage value is important but has not had any particular effect or influence at a wider than local scale.

Historic Value

Significance	Explanation	Scale
The <u>entire RPB site</u> and its contribution to 1960's Architecture.	The design and development of the RPB site was gained through discussions and meeting in Holland to look at new way of delivering leisure facilities. The resultant design of the RPB is influenced via these discussions in order to create a building which would be of an international standard in terms of facilities, layout, access and design.	IS
The <u>entire RPB</u> and its association with the political climate of the 1960's.	The construction of the RPB came at a time when there was increasing pressure from the government to undertake provision of sports and leisure facilities. The building optimises the 1960's government vision as a result of the Wolfenden Committee of Sport report as a state of the art facility which embraces the very latest materials and design which was constructed as an exemplar example of a national scale during post war Britain.	NS

<p>The <u>entire RPB site</u> and its association with Architect Leslie Gooday (1921-2013).</p>	<p>Leslie Gooday was an architect and designer of national importance and ran the company Leslie Gooday and Associates, which specialised in both exhibition design and modernist residential and commercial architecture. Gooday along with his team designed a number of high profile projects within the UK and abroad during the early – mid 20th Century. Gooday undertook designs for internal exhibitions such as the Festival of Britain, and designing the British Pavilion at the Japan Exhibition 1970. Gooday worked with a number of prominent architects of the time such as Eric Lyons, and Michael Brown, and was influenced by the designs of Frank Lloyd Wright in undertaking a number of ‘organic’ modernist housing designs. Other examples of his work are also listed, such as his own home Long Wall, Golf Club Road in Weybridge (www.tobywalker.co.uk, Harwood 2015).</p>	<p>NS</p>
<p>The <u>entire RPB site</u> and its association with Landscape Architect Michael Brown (1992-1996)</p>	<p>Michael Brown was a prominent Landscape Architect during the early to mid 20th Century and undertook a number of schemes which are celebrated at a national level. He was responsible for designing a number of public spaces, particularly working with Eric Lyons to deliver new movements in architecture and design, such as the grade II listed span housing of Twickenham, to a complete masterplan of new towns of the time such as Redditch. Brown is seen as one of the leading landscape architects of the 20th Century and is known for his schemes always ‘impeccably detailed and introduced a human scale to the landscape, often in contrast to an intimidating surround of deck access housing’ (www.independent.co.uk)</p>	<p>NS</p>
<p>The <u>RPB</u> is a fine example of facilities for a growing local and regional community</p>	<p>The RPB has local and regional historic interest for how it originally delivered international standard facilities for a growing local population. The building was constructed in order to utilise current technology of the time and a centre designed to not only replace the former Victorian baths, but be a centre where the local community could experience and become more involved with leisure activities.</p>	<p>LS</p>

Aesthetic Value

Significance	Explanation	Scale
The <u>entire RPB</u> as an intact example of a handful of public baths constructed in the 1960's.	The public baths survive as a unique and largely intact building that exemplifies the modernist era of design of public buildings in the early 1960's. The building utilises design considerations from abroad which places the building on an international level of significance amongst other examples of public baths which were also constructed at the time. As such the RPB is a unique and rare survivor of a building of this date and calibre which has international significance.	IS
The <u>entire RPB site</u> and the use of materials.	The materials used for the public baths which incorporated Bryta Stainless steel railings and handrails, a 'Top-draw' drainage system, pre-cast Terrazo floor tiles, 99,000 wall tiles; the use of large curtain walls of glazing and the arrangement of concrete and steel beams and copper detailing exemplified the most modern vernacular of the time which not only was built for purpose in this swimming pool environment, but as a showpiece of a community facility.	NS
The <u>grounds</u> and the building as a fine example of landscape architecture in the integration of the RPB into the landscape	The landscaped grassed areas were not only designed for sun-bathing, but with trees and undulations in the topography, allowed the building to be better integrated into this garden setting with the Old Deer park adjoining the Royal Botanic Gardens at Kew. The work is another good example of Brown's work which has national significance.	NS

Evidential Value

Significance	Explanation	Scale
<p>The <u>RPB</u> as a rare example of a 1960's purpose built swimming pool.</p>	<p>According to the '<i>Designation and Selection Guide – Sport and Recreation Buildings</i>, swimming pools represents the largest group of sports and recreation building which are listed, with consideration given to the stand-out architectural or engineering design, intactness, and the juxtaposition of spaces with both indoor and outdoor pools adding to the building's interest (English heritage 2012:13). Taking this into account, the RPB is of particular significance and rarity given that it is a purpose-built post-war building of exemplary design, which is largely intact and features both indoor and outdoor pools and has significant design outcomes and innovations for a building of its age that is comparable to other listed swimming pools of the time such as the Coventry Baths.</p>	<p>NS</p>
<p>The <u>entire building</u> as the evolution of a public swimming baths into a leisure centre over the past 51 years.</p>	<p>The building is significant as it demonstrates the evolution of a purpose built community facility for the local community. The building has grown from a predominant swimming baths with a warden living on site; to a much larger facility which incorporates weights, studio as a result of refurbishment. The building's interior is therefore significant in that it shows how the building has been adapted to the needs of the community over time.</p>	<p>LS</p>

Communal Value

Significance	Explanation	Scale
The <u>design of the building</u> as a contribution to the architectural community	The RPB is a fine example of modernist architecture by the level of detail, design, landscaped setting, materials and craftsmanship which is comparable to many higher graded modernist buildings.	IS
The <u>entire building</u> as a contribution to the 20 th Century Society;	The Twentieth Century Society was founded as the Thirties Society in 1979 to champion architecture post dating 1914. The building would therefore be of interest to this community which is a national body.	NS
The <u>entire building</u> and its contribution to the Richmond-upon-Thames Community.	The building represents the flagship leisure centre for the London Borough and continues to benefit the community as a centre of passive and active leisure and recreation.	LS
The <u>entire building</u> and its association to the collective memory of those who have used the building	As the building has been utilised for the past 50 years, the building features in the collective memory of the community who have used the facilities. Current and past users of the pools will have memories of the pool, its layout and materials and may associate the pools with important events, activities and associations with family members and friends.	LS

Glossary

The definitions of the glossary come from the Burra Charter (ICOMOS 1999)

Word	Definition in the context of this report
Adaptation	Encompasses all the processes of looking after a place so as to retain its significance. It includes maintenance, preservation, restoration, reconstruction and adaptation, and will often be a combination of processes.
Conservation Approach	<p>A conservation approach consists of the following principles:</p> <ul style="list-style-type: none"> • Buildings and elements should be repaired rather than restored; • Existing historic fabric and elements in good condition should be retained; • Elements of historic buildings should be replaced only where essential (such as to convey symmetry or match opposites) • Additions outside of the historic fabric should be avoided but should complement and not copy the historic buildings • Interventions should be kept to the minimum necessary • Intrusive features of little historic interest may be removed • Damage due to vandalism may be reinstated, as long as sufficient evidence exists
Maintenance	Maintaining the continuous protective care of the fabric, contents and setting of a place.
Preservation	Maintaining the fabric of a place in its existing state, and retarding deterioration.
Protection	The guarding or prevention of significant fabric against actual or potential damage, which might arise from planned activity, accidental events or wear and tear and processes of decay.
Restoration	returning existing fabric to a known earlier state by removing accretions or re-assembling existing components, without introducing additional materials, new or old, into the fabric.

Bibliography

Secondary References

Brown, Michael (1963) '*Boundary Wall Elevation Plan*' Drawing L13. Drawn by Michael Brown Landscape Architect.

English Heritage (2008). '*Conservation Principles: Policies and Guidance for the sustainable management of the historic environment*' Published by English Heritage, London

English Heritage (2012). '*Designation Selection Guide: Sports and Recreation Buildings*' Published by Historic England Publishing, Swindon.

Fabian, Dietrich Dr. (1958). '*Modern swimming pools of the world: Directions for the Building of Modern Swimming Pools in Photos and Plans.*' Published by Florence National Pool Equipment Company, Florence, Italy

Gooday, Leslie (1963). '*South Elevation Plan.*' Drawing No 447-P7. Drawn by Leslie Gooday Architect.

Gordon, Ian & Inglis, Simon (2009) '*Great Lengths: The historic indoor swimming pools of Britain*' Published by Historic England Publishing, Swindon.

Greater London Authority (2016) '*The London Plan,*' Published by The Great London Authority, London

Harwood, Elain (2015) '*Space, Hope, and Brutalism: English Architecture, 1945–1975*' Published by Paul Mellon Centre for Studies in British Art, London

ICOMOS (2003) '*ICOMOS charter- principles for the analysis, conservation and structural restoration of architectural heritage*' Published by the International Council of Monuments and Sites, UK Branch

ICOMOS (2013) '*The Burra Charter*' Published by the International Council of Monuments and Sites, Australia Branch, pp2,

London Borough of Richmond upon Thames (1966) '*Richmond Baths Official Opening Programme,*' Published by London Borough of Richmond Upon Thames

London Borough of Richmond upon Thames (1992a) '*Richmond Swimming Pool Development Proposals, Public Consultation 19 February – 10 March 1992,*' Published by London Borough of Richmond Upon Thames

London Borough of Richmond upon Thames (1992b) '*Leisure Services Committee, Agenda Item 3, Richmond Swimming Baths Refurbishment/ Development Proposals,*' Published by London Borough of Richmond Upon Thames

London Borough of Richmond upon Thames (2011) '*Development Management Plan,*' Published by London Borough of Richmond Upon Thames

Prescott, Malcolm (1992) '*Pool site plans spark rumpus.*' Surrey Comet, Published 14/02/1992

Prince's Regeneration Trust, The (2009) *'How to write Conservation Reports.'* Published by The Princes Regeneration Trust, London

Richmond and Twickenham Times (1959a) *'Baths Plan: Rotary to ask public'* 18/04/1959

Richmond and Twickenham Times (1959b) *'15-1 favour pool in Deer Park'* Published 11/07/1959

Richmond and Twickenham Times (1959c) *'Park Baths passed after 2hr Debate'* Published 25/07/1959

Richmond and Twickenham Times (1959d) *'Hush-hush trip to Holland for Baths Team'* Published 24/11/1959

Richmond and Twickenham Times (1989) *'Deadly dust shuts pool,'* Published 06/07/1989

Surrey Comet (1992) *'Whitewater wind pool venture bid,'* Published 27/03/1992

Thames Valley Times (1961) *'[title not visible]'*, Published 14/06/1961

Warpole, Ken (2000) *'Here comes the sun: Architecture and public space in twentieth century European culture,'* Published by Reaktion Books Ltd, London

Websites

Civic Trust Awards Richmond Baths

<https://www.civictrustawards.org.uk/benet/schemes/richmond-baths> (Accessed 09/08/17)

<http://www.gelderlandinbeeld.nl/beeldbank/weergave/record/?id=6e34df79-e205-4455-9265-3765b3d23700>

<http://www.independent.co.uk/news/people/obituary-michael-brown-1340740.html>

<http://www.tobywalker.co.uk>