

# Litter in the River Crane



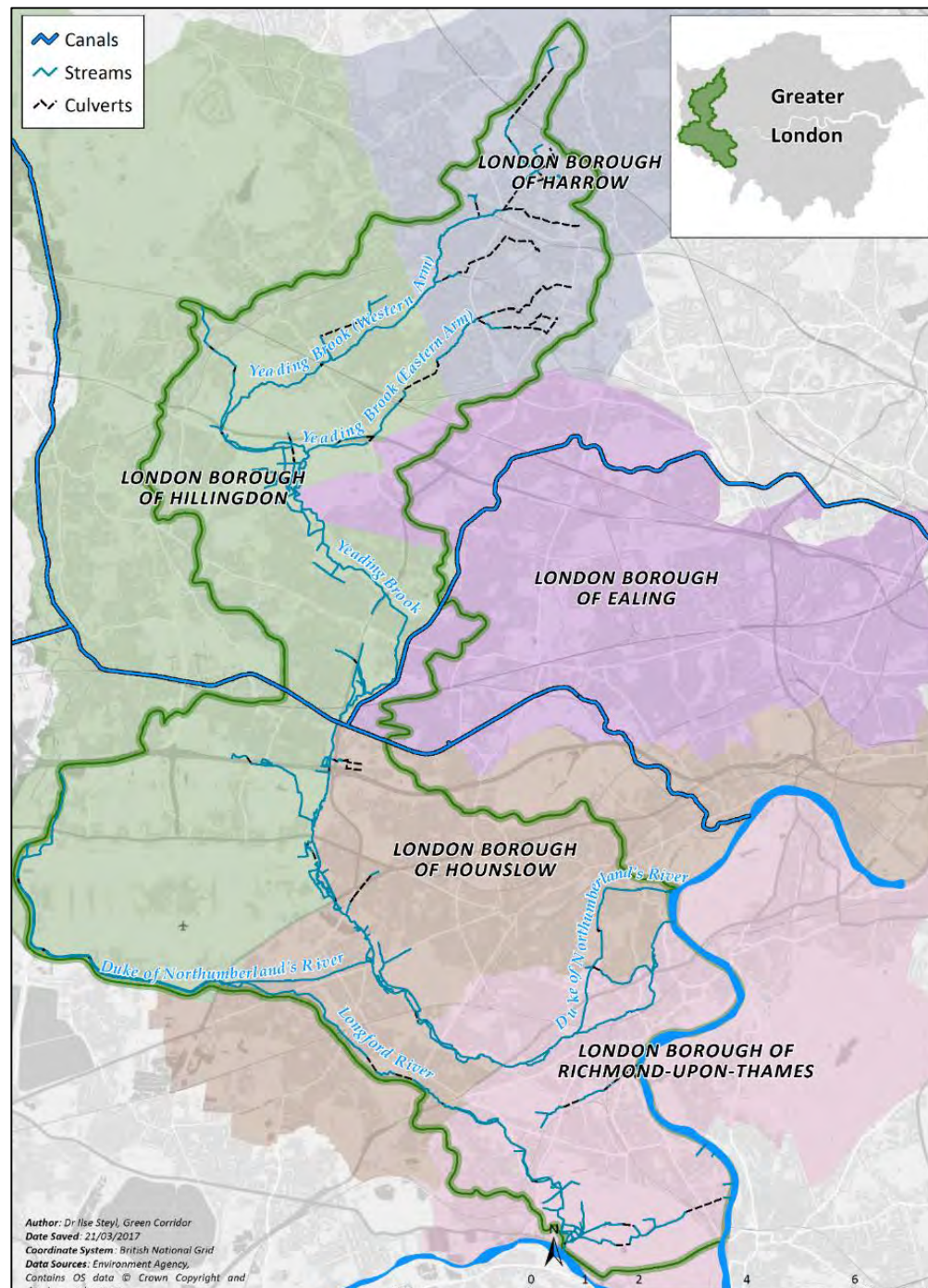
Rob Gray

Friends of the River Crane Environment (FORCE)



## Friends of the River Crane Environment (FORCE)

- Founded in 2003
- Over 500 members
- Volunteer only organisation
- Manage small projects (£30k pa)
- Deliver larger projects through partners (£300k pa)



## Crane catchment

- 120 sq km of west London
- 40 km of river
- 1500 Ha linear open space
- Richmond and Hounslow at base of catchment

# FORCE Volunteer Days

- Second Sunday of every month – October to June (since 2003)
- 20 volunteers for 5 hrs = 100 hrs – 10 to 20 hrs on litter collection
- Litter collected since 2003, data since December 2016
- Recyclable materials (glass, plastic and cans) separated out
- Report produced and updated every month





# Litter collected on Volunteer Days

Date	Plastic bottles	Cans	Glass bottles	PCG recycle (kg)	Other rubbish (kg)	Total (kg)
11/12/16	75	400	75	60	140	<b>200</b>
8/1/17	58	150	30	20	40	<b>60</b>
12/2/17	41	50	25	15	60	<b>75</b>
12/3/17	48	85	20	5	35	<b>40</b>
9/4/17	126	87	43	75	125	<b>200</b>
14/5/17	6	8	0	0.2	0.8	<b>1</b>
8/10/17	19	4	14	3	100	<b>103</b>
12/11/17	30	36	2	3	27	<b>30</b>
10/12/17	10	145	10	10	20	<b>30</b>
17/12/17	91	201	27	30	30	<b>60</b>
12/1/18	72	117	37	30	100	<b>130</b>
17/1/18	44	32	10	24	0	<b>24</b>
12/2/18	288	299	375	100	800	<b>900</b>
<b>Total</b>	<b>908</b>	<b>1614</b>	<b>668</b>	<b>375</b>	<b>1478</b>	<b>1853</b>

# Key Findings

- Removing litter reduces the littering rate
- It also promotes pro-social behaviour
- Litter hot spots – behind walls, by bus stops and drinking hang outs
- Targeted informal signage may work



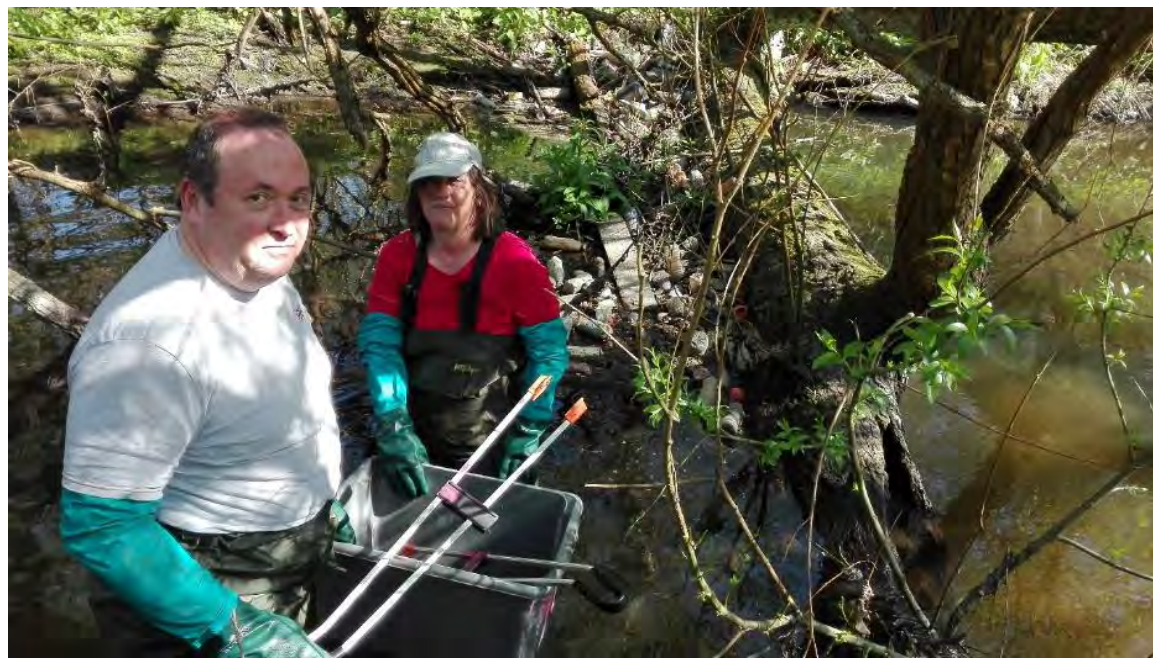


*FORCE*

Not all signage works!

## Focus on Plastic

- park → river → estuary → sea → ocean
- Around 4 M tonnes/year worldwide enters the ocean via rivers
- Accumulates at 25 bottles/hectare/year in Crane Park
- Estimate: 10,000 to 30,000 bottles/year go into the river
- FORCE intercepted 1000 bottles in 2017 (3 to 10 %)
- The value of debris dams





# What Next?

- Continue litter collection – and data collection!
- Target hot spots – including further signage tests
- What to do about littering from bridges?
- Encourage pro-social behaviour
- Promote the work to others



# Thank You

Rob Gray

Friends of the River Crane Environment (FORCE)



[info@force.org.uk](mailto:info@force.org.uk)



[www.force.org.uk](http://www.force.org.uk)



[facebook.com/friendsrivercrane](https://facebook.com/friendsrivercrane)