

# Hammersmith Bridge Public Meeting

Wednesday 19<sup>th</sup> June 2019 – St Michael and All Angels Church

# Chair introduction

Emma Robinson – Town Centre Manager  
for Barnes:

- Purpose of the meeting
- Rules of the meeting
- Agenda of the meeting

# Agenda for the evening

- Welcome from Chair – introduction to the panel and welcome from Fr Stephen
- Introduction from Cllr Alexander Ehmann from Richmond Council
- Presentation from Candida Jones, Programme Manager from Hammersmith and Fulham Council
- Question and Answers
- Meeting close from Cllr Gareth Roberts from Richmond Council

# Clr Alexander Ehmann

Deputy Leader and Chair of the Transport and Air Quality Service  
Committee at Richmond Council

# Update from Richmond Council

- Richmond Council does not own nor have any maintenance responsibility for the bridge.
- Working together with Hammersmith and Fulham Council and TfL in a spirit of co-operation.
- We know that residents are concerned about the buses / the desire for alternative arrangements to be considered.
- Richmond Council is committed to ensuring that the views of Richmond upon Thames residents do not go unheard. This event is part of that listening exercise.

# Update from Richmond Council cont...

Following the bridge closure on Wednesday 10<sup>th</sup> April 2019:

- Wrote to Hammersmith and Fulham Council (LBHF) about bridge closure on 11 April
- Met with LBHF Cabinet Member on 23 April
- Met with TfL on 23 April
- Liaising with Emergency Services
- Wrote to TfL on mitigation funding request on 17 May
- Wrote to TfL on buses on 21 May
- Leaders met to discuss bridge on 30 May
- Letter to residents sent to print on the 1 June
- Press release and web pages launched on the 4 June
- Survey launched 4 June – 16 July
- Wrote to TfL and LBHF about shuttle service and potential Richmond Council support for the project on 6 June
- Discussed buses with TfL on 14 June
- Arranged public meeting for 19 June

# Update from Richmond Council cont...

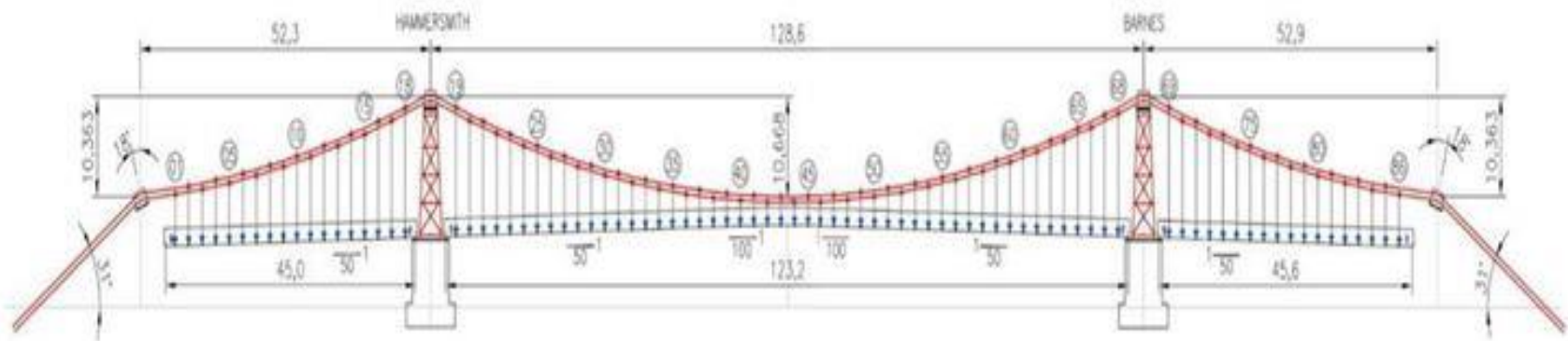
Since Hammersmith Bridge has been closed, a number of local roads have suffered from additional bus movements and as a result we have to carry out numerous minor road repairs.

We have also carried out

- Major carriageway patching repairs between Church Rd & Lonsdale Rd (£35k)
- Resurfaced the road at the traffic signal approach between the Bridge and Lonsdale Rd. (£10k)
- We are currently recovering/remarking all the road markings between Rocks Lane and Hammersmith Bridge (£5k)
- We are currently using the closure as an opportunity to plan a major carriageway joint sealing operation along Castelnau to resolve a long term reflective cracking problem. This will cost £25k and we are aiming for the work to be carried out by a specialist contractor in September.
- Reviewing resident requests for additional CPZs in the Hammersmith Bridge area.

# Fully restoring Hammersmith Bridge

## a brief history





# Hammersmith Bridge



Opened in 1887.

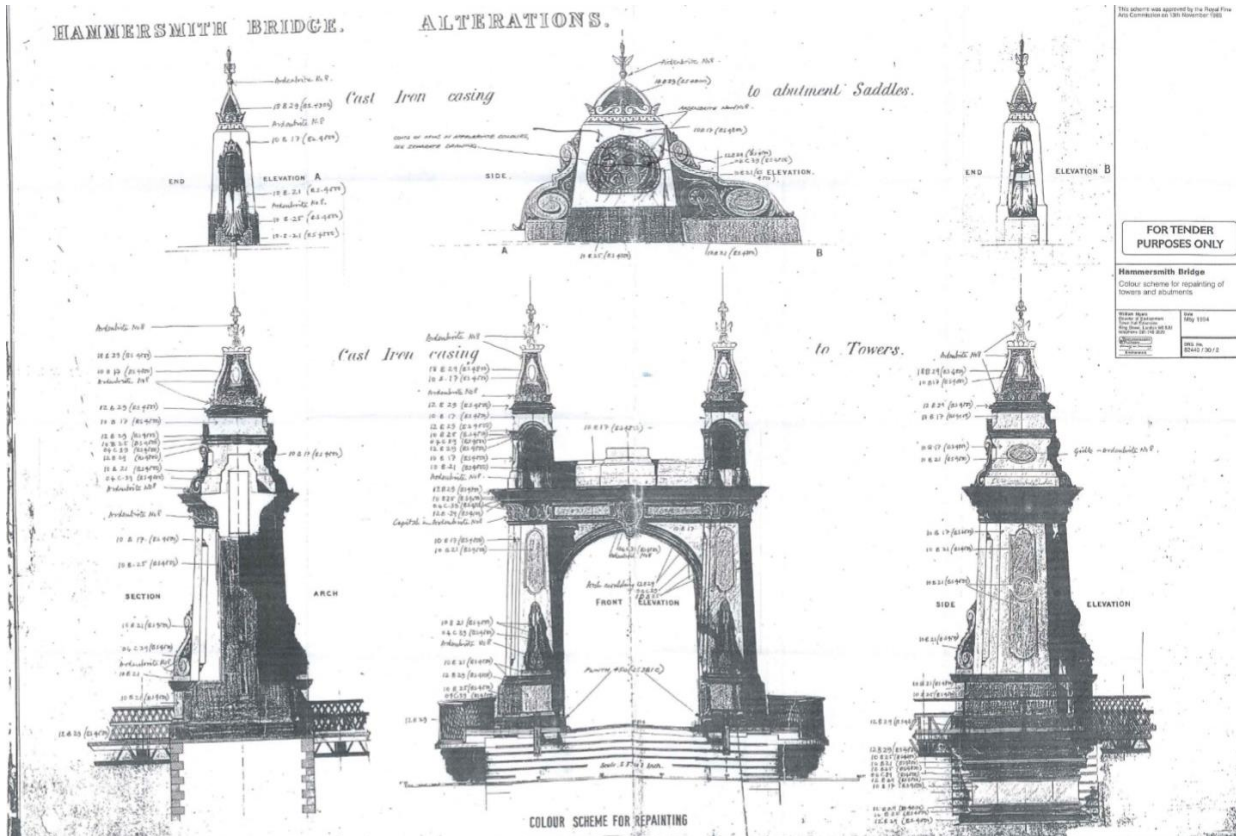
Designed by noted C19th engineer, Sir Joseph Bazalgette.

It's a complex feat of Victorian engineering.



Built in cast iron, wrought iron and a wooden carriageway substructure.

# Technical drawings



Original drawing

# Material issues

Originally designed to move and flex to absorb shock and vibration.

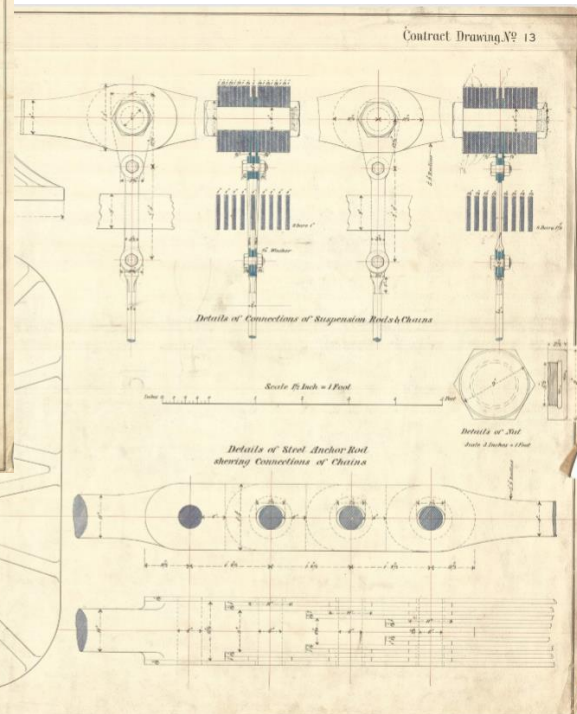
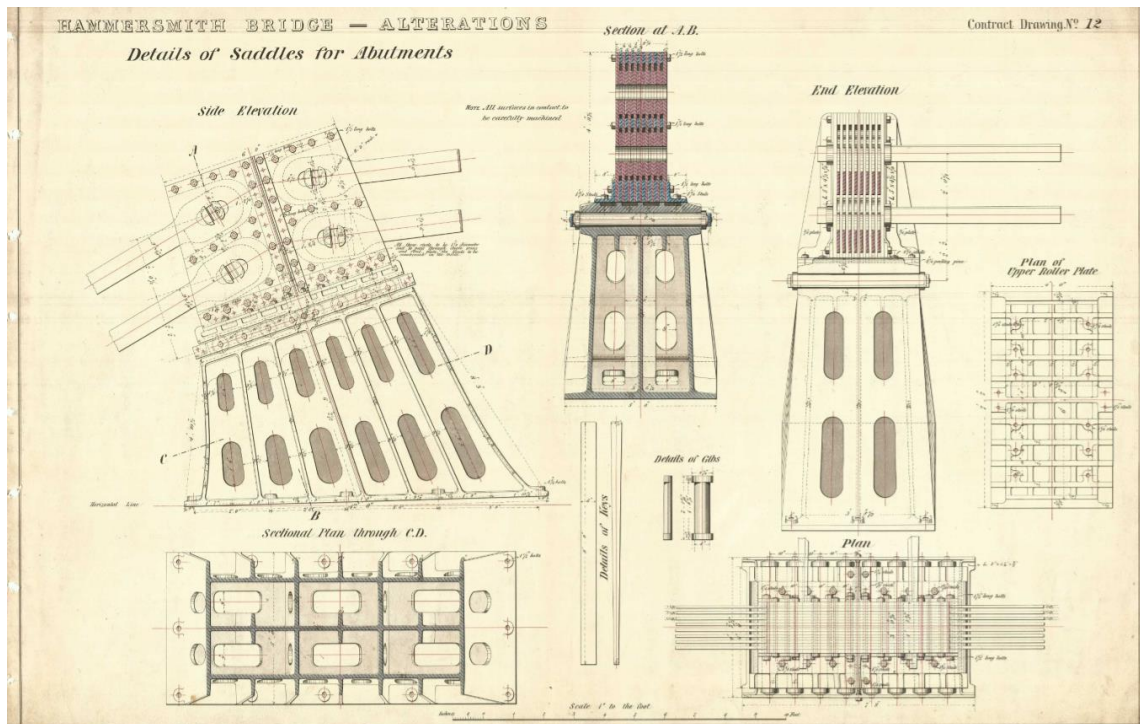
In the post war period, weather, wear and vibration damaged the suspension system, preventing it from flexing.

Vibrations channelled into the fixed iron structure - while cast iron is very strong, it's also brittle and inflexible.

This stressed the iron, creating small cracks in the casings surrounding the bridge's pedestals.



# Original plans



# The last decade

In 2012, the Council spent £250,000 on decking.

No plan to fully test the structural integrity **or** fully refurbish the bridge existed until 2015 when:

- H&F and TfL began exhaustive examination of the bridge's structural integrity – the most thorough in its history
- A £25 million refurbishment plan was agreed with TfL
- Numbers of buses were restricted.

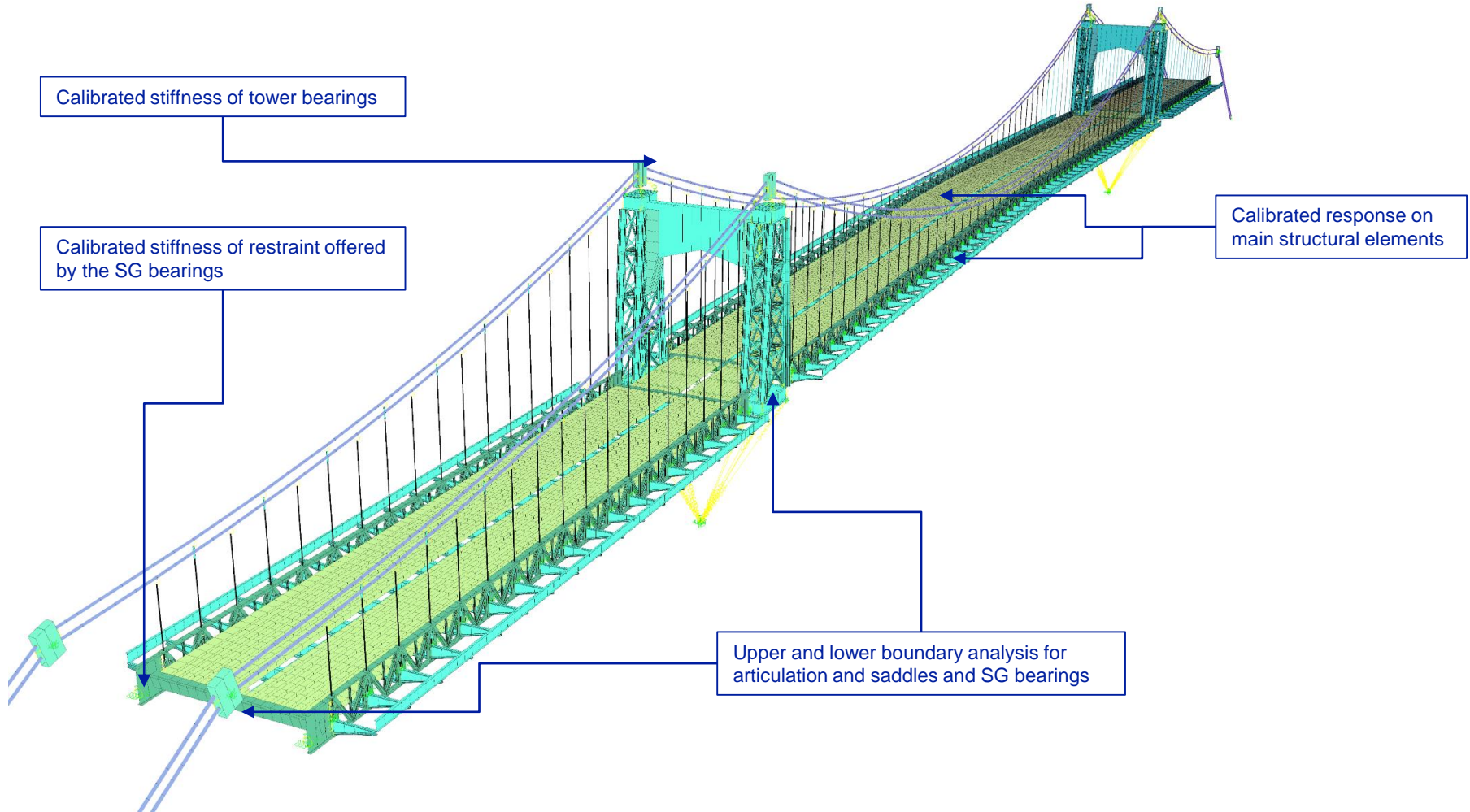


## The last decade

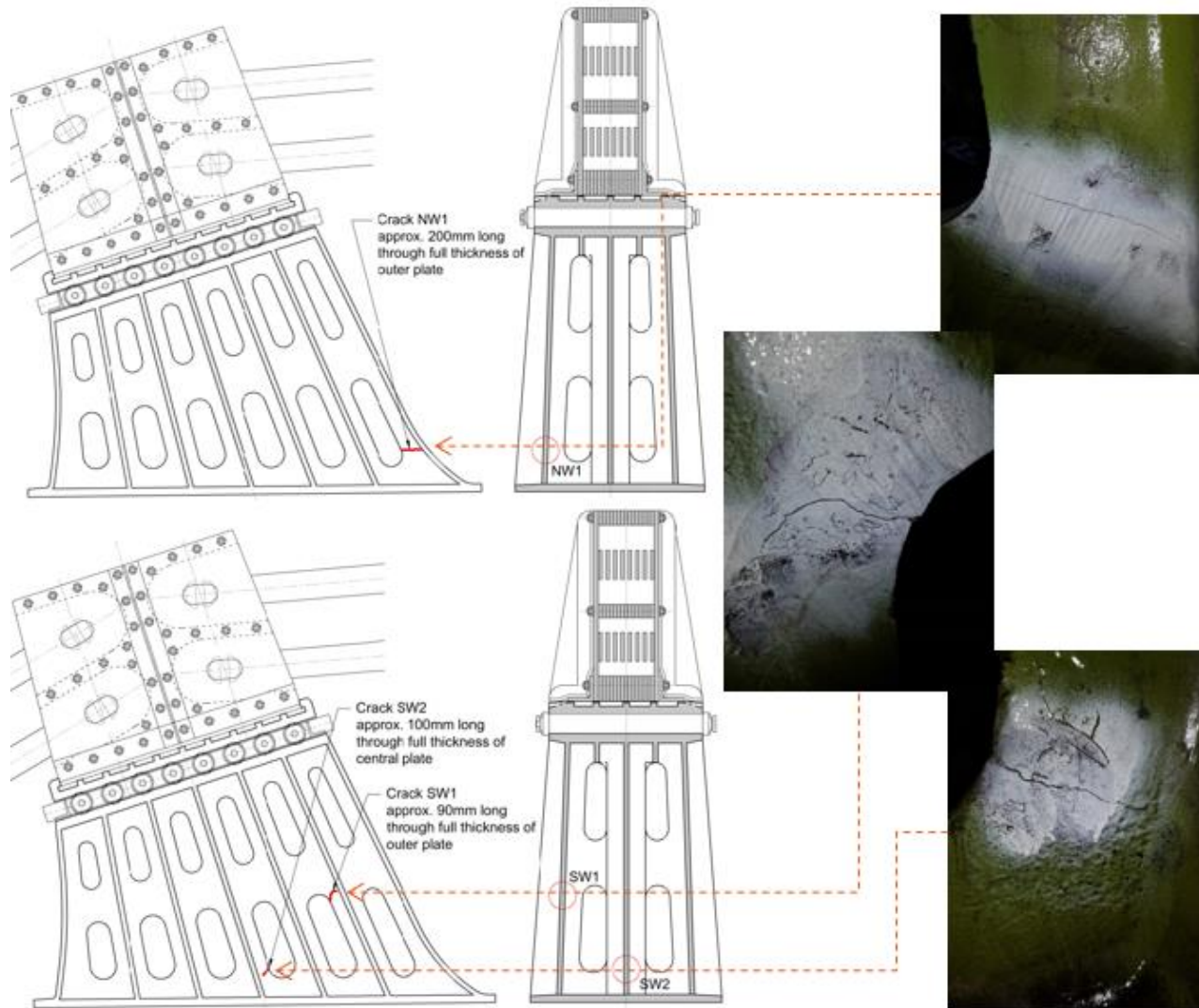
- Between 2015 to the current date H&F and TfL have undertaken £5.35 million of works so far
- Weekly safety check
- State-of-the art sensors have been installed



# Calibrated analytical model



# Finding the micro-fractures



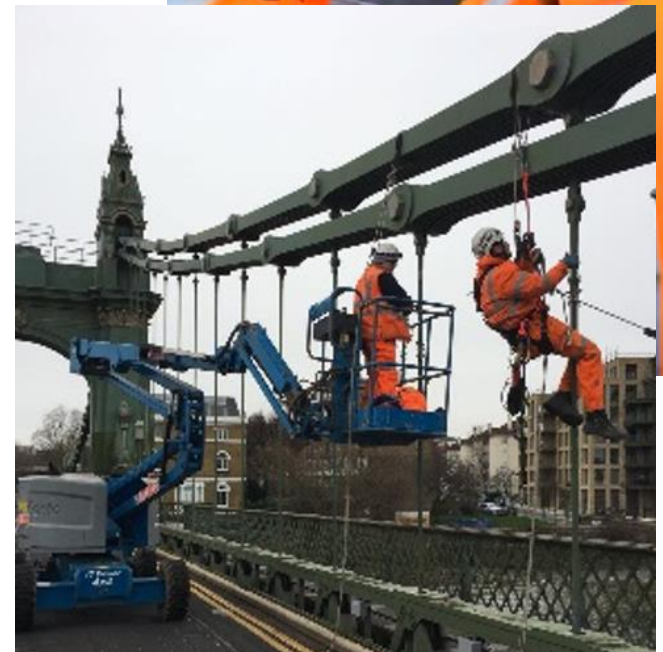
Detailed safety checks revealed five micro-fractures so far.



# Making the bridge safer now

We are:

- aiming to launch a TfL-funded buggy service for less mobile users/the elderly
- adding new lights and CCTV cameras
- monitoring daily
- installed new warning systems
- dismantling the casings around the cracks to identify the repairs needed.



# World-leading engineers

World-class, specialist engineers under-taking this work:

Mott MacDonald

Atkins

Arup

Mistras

CAN

Veqter

Aecom

Hyder/Arcadis

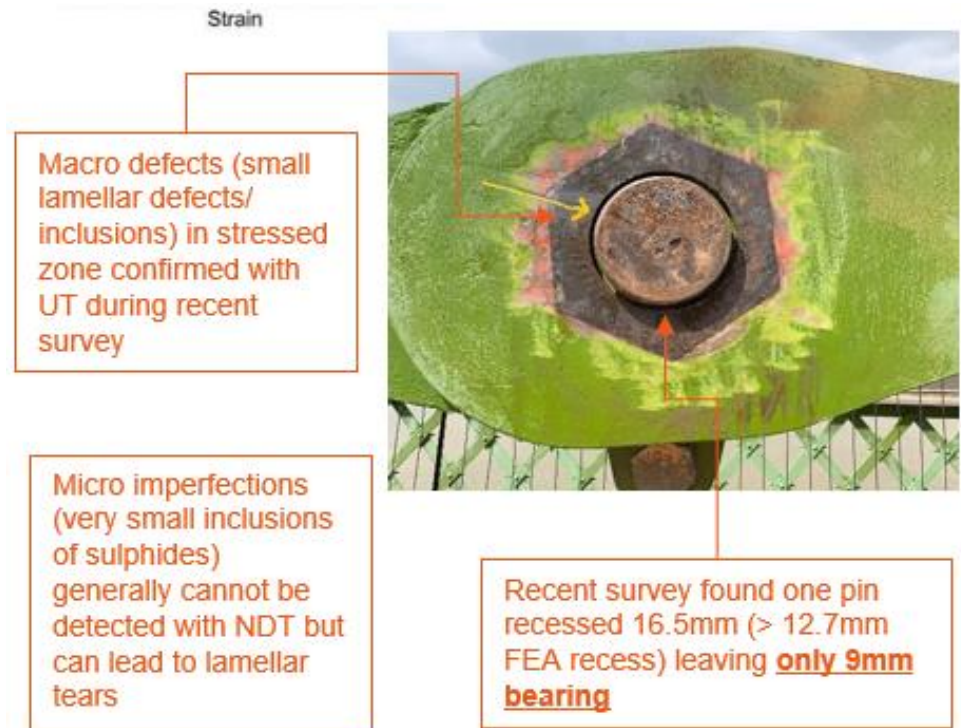
FM Conway

Bam

CVU

Taziker

Industries



# When will the work start?

We are working with TfL to re-opening the bridge and restore it to its former Victorian splendour as soon as possible.

Full diagnosis by mid-August.

We'll then be able to give a more precise timescale for re-opening, but it might be as long as three years.



# TfL's bus service changes

Routes 33, 72, 209, 419, and 485 will run shortened or altered routes.

A new 533 route will run between Barnes and Hammersmith via Chiswick Bridge.

The 265 has been increased in frequency between Roehampton and Putney Bridge station.

Route 609 will no longer run.

Route 72 reinstated to its full length north of the river, so it runs between Hammersmith and East Acton.



# QUESTIONS AND ANSWERS

The below are the themes in which questions will be taken. We will take 1 question at a time:

- Structure of the bridge / reason for closure
- Buses
- Mitigation / interim measures
- Future of the bridge
- Any other theme

# Final words: Cllr Gareth Roberts – Leader of Richmond Council

Please remember to have your say in our  
Hammersmith Bridge survey. Go to:  
[www.richmond.gov.uk/hammersmith\\_bridge](http://www.richmond.gov.uk/hammersmith_bridge)

# THANK YOU FOR COMING

Presentation and video will be available at the below website in 2 days. Please make sure you sign up to receive updates from the Council in the weekly e-newsletter:

[www.richmond.gov.uk/hammersmith\\_bridge](http://www.richmond.gov.uk/hammersmith_bridge)

Follow the Council on Twitter @LBRUT