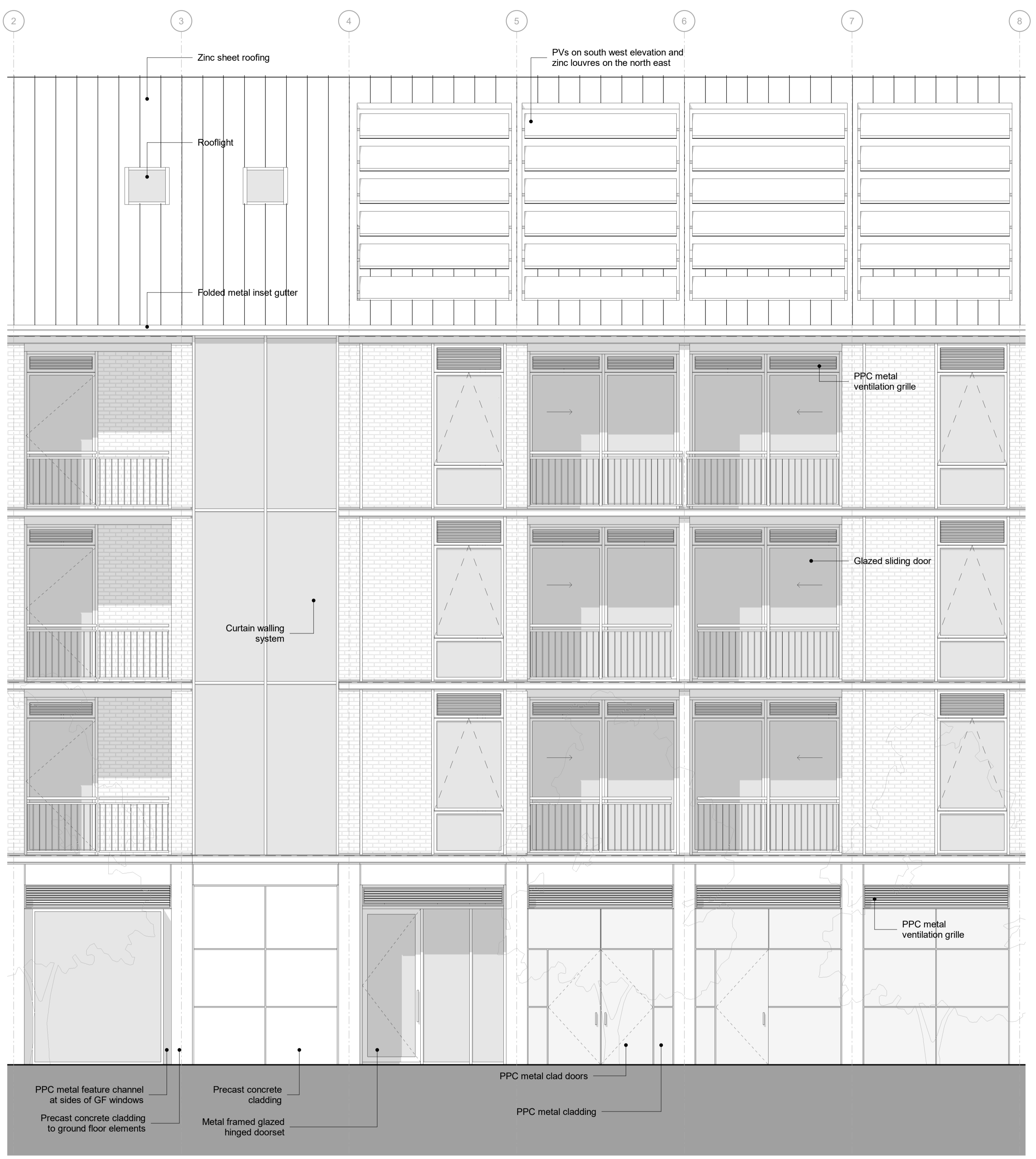


**1** Wharf Lane - Typical Bay Gable End  
2690 1:50



**2** Wharf Lane - Typical Bay  
2690 1:50

| Date       | Rev. | Description           | Approved By | Date | Rev. | Description | Approved By |
|------------|------|-----------------------|-------------|------|------|-------------|-------------|
| 26/07/2021 | C01  | M160 - Planning Issue | MB          |      |      |             |             |
|            |      |                       |             |      |      |             |             |
|            |      |                       |             |      |      |             |             |
|            |      |                       |             |      |      |             |             |

**PLANNING**

Scale at 1:50

|            |  |      |     |                     |             |            |
|------------|--|------|-----|---------------------|-------------|------------|
| Project    | Twickenham Riverside   | Code | TRS | File Name           | Number      | Rev.       |
| Subject    | Wharf Lane Building<br>Typical Bays  |      |     | TRS-HAL-01-ZZ-DR-A- | <b>2690</b> | <b>C01</b> |
| Architects | Hopkins Architects Limited<br>27 Broadley Terrace, London, NW1 6LG<br>T: 020 7124 1751 E: mail@hopkins.co.uk |      |     | Date 06/09/21       | Scale 1:50  | at A1      |