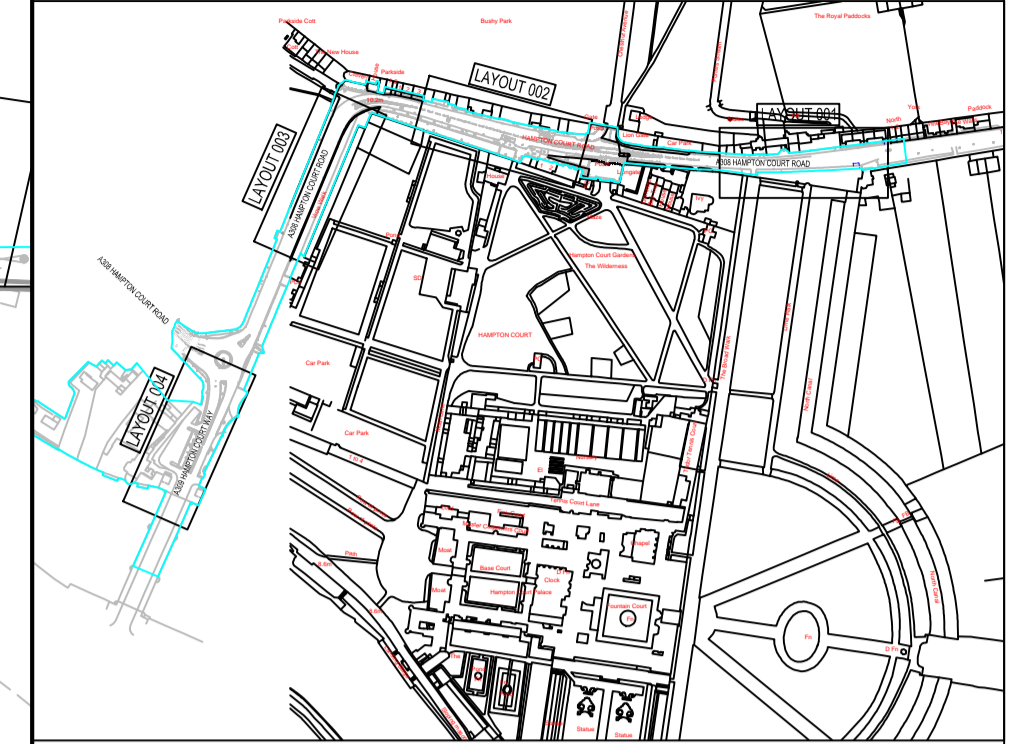


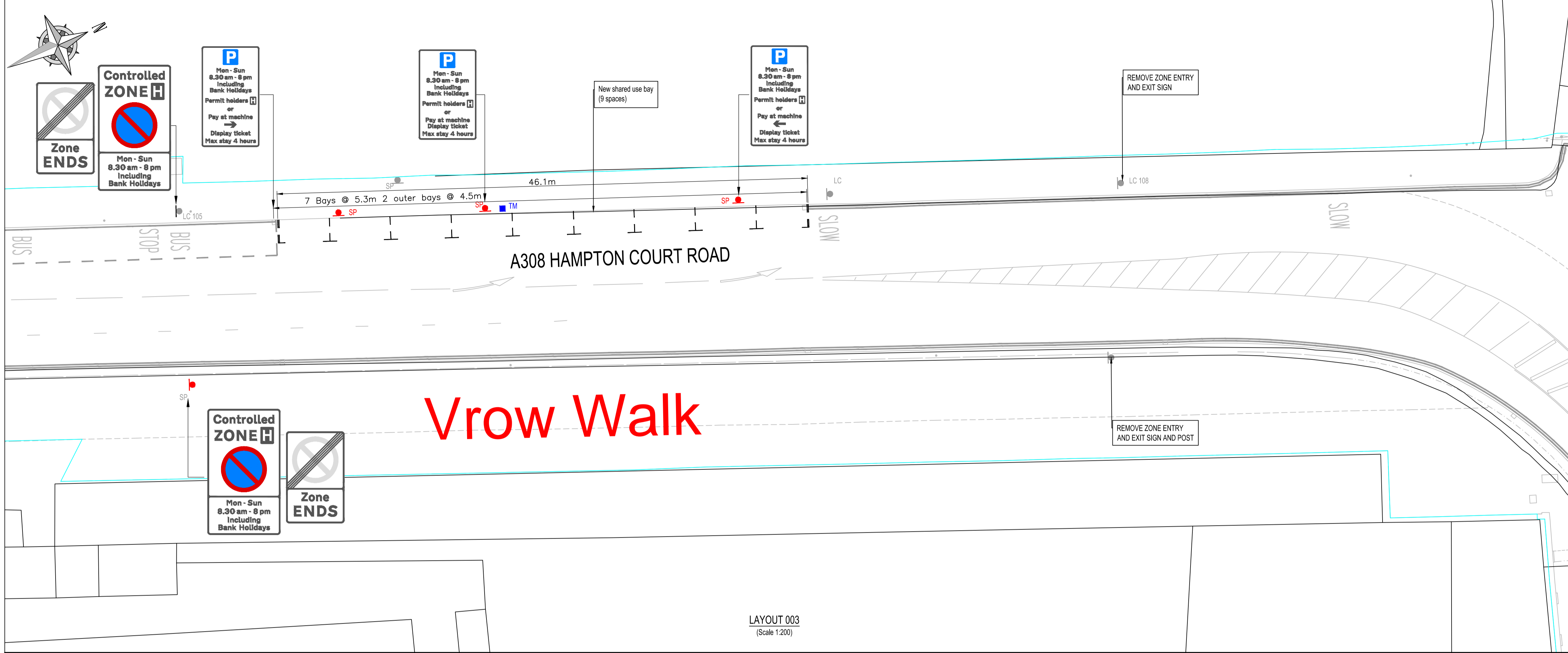
*This map is reproduced from Ordnance Survey material with the permission of the Controller of Her Majesty's Stationery Office © Crown copyright. Unauthorised reproduction infringes Crown copyright and may lead to prosecution or civil proceedings 100019441 (2012).



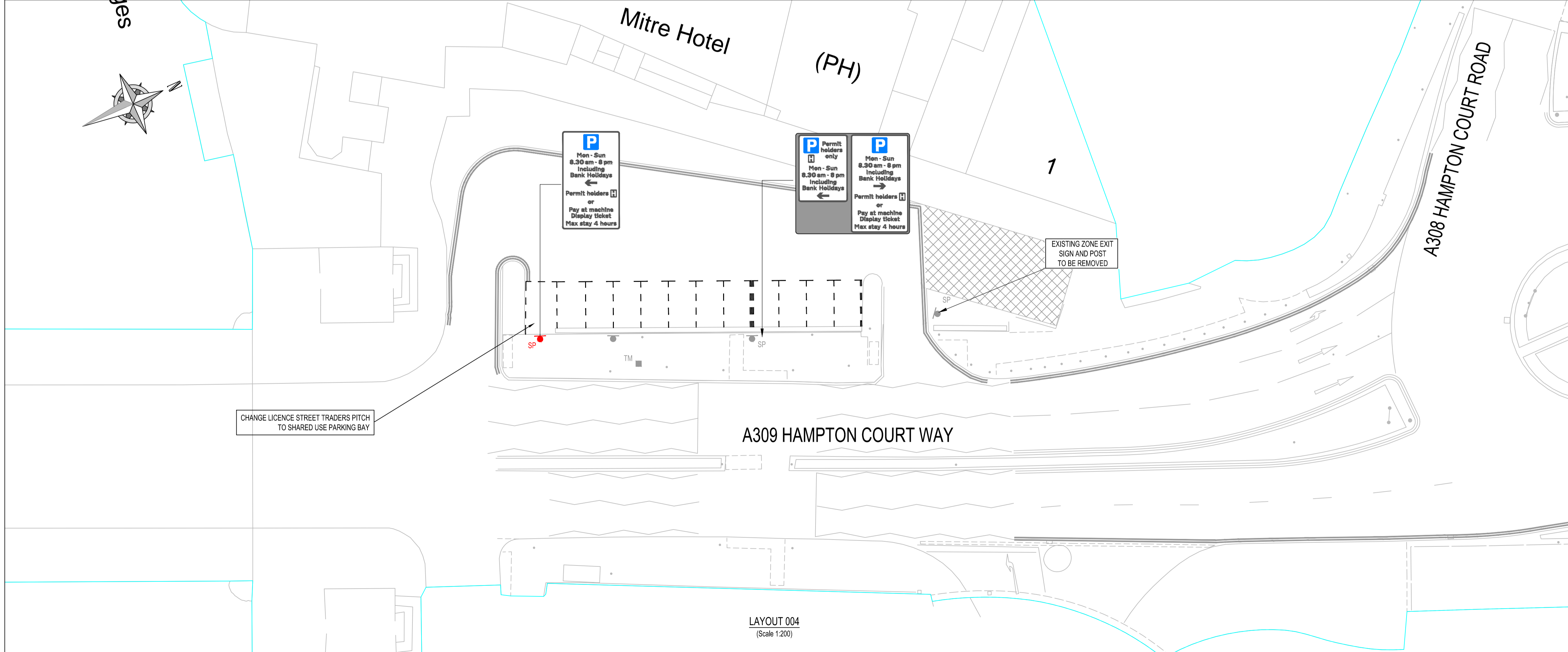
LOCATION PLAN (NTS)

- NOTES:
- DO NOT SCALE FROM DRAWINGS
 - ALL DIMENSIONS ARE IN METRES UNLESS NOTED OTHERWISE
 - ALL SETOUT TO FACE OF KERB
 - ALL DIMENSIONS TO BE VERIFIED ON SITE BY THE CONTRACTOR WITH SUPERVISING ENGINEER
 - ALL LINE MARKING TO CHAPTER 5 OF THE TRAFFIC SIGNS REGULATIONS AND GENERAL DIRECTIONS 2002.

- KEY:
- LC EXISTING LAMP COLUMN
 - SP EXISTING SIGN POST
 - TM EXISTING PAY & DISPLAY TICKET MACHINE
 - EXISTING DOUBLE YELLOW LINES
 - SP NEW SIGN POST
 - TM NEW PAY & DISPLAY TICKET MACHINE
 - NEW DOUBLE YELLOW LINES



Vrow Walk



A	HOURS OF OPERATION AMENDED	TJM 03.02.16	TJM 03.02.16	MP 03.02.16	MT 03.02.16
-	-	TJM 18.12.15	TJM 18.12.15	MP 18.12.15	MT 18.12.15

LONDON BOROUGH OF RICHMOND UPON THAMES		DRAFT	SCALE (AT A1 SIZE)
CLIENT		ISSUE	1:200
PROJECT HAMPTON COURT CPZ REVIEW			
DRAWING TITLE GENERAL ARRANGEMENT SHEET 2 OF 2			
ISSUING OFFICE TWICKENHAM	DRAWING NUMBER 2245_HCOURT_1200_002	REVISION A	
TELEPHONE 020 89911411			