



Community Conversation

Voluntary Sector Forum

06 September 2023



Welcome and Introduction

Cllr Nancy Baldwin

Spokesperson for Communities, Equalities and the Voluntary Sector, Richmond Council

VOLUNTARY SECTOR FORUM AGENDA

Networking and Refreshments 09:30 – 10:00 (The Salon, York House)	
10:00 –	Welcome and Introduction
10:10	Cllr Nancy Baldwin – Spokesperson for Communities, Equalities and the Voluntary Sector
10:10 –	Cost of Living workstream update
10:30	Bethany Pepper, Cost of Living Programme Manager, LBRuT
10:30 –	Council Grant Funding
11:00	Clarinda Chan, Community Grants Officer and Rajiv Bhattacharjee, Community Engagement Manager, LBRuT
11:00 –	South West London Voluntary and Community Sector Alliance
11:15	Sara Milocco, South West London Voluntary and Community Sector Alliance Director
11:15 –	Richmond as a Borough of Sanctuary
11:30	Helena McGinty, Head of Refugee Services, LBRuT
11:30–	Richmond CVS autumn offer for VCS groups
11:35	Julie Gavin, Capacity Building Manager, Richmond CVS
11:35 –	Health and Wellbeing Strategy Consultation and Full of Life Fair
11:40	Katherine Foreman, Communications Manager, LBRuT
11:40 –	Open Forum and Q & A
12:00	
Networking and Refreshments 12:00 – 12:30 (The Salon, York House)	

Richmond's Cost of Living Programme

Voluntary Sector Forum
6th September 2023



What have we done so far?

- The Council has approved £3m to support residents, communities and businesses. So far allocated £1.6m, plus £2.5m Household Support Fund
- The extent of the challenge requires close working with partners to make best use of resources in unprecedented circumstances.
- Need to continue to understand from local communities what issues are the most pressing and what support would make the most difference.
- The response is focused on 8 priority themes.





59 home energy visits, saving each household on average £303



Over 1000 subscribers to Cost of Living emails

450 residents attended the 'Employ Richmond' Fair



£483k directed to the VCS



807 food parcels handed out at youth centres



50 warm spaces open over winter 2022/23



4,691 hot drinks given out at libraries

EntitledTo calculator completed 1,097 times



Project highlights

- The £3m has so far funded 19 projects across a range of council services and voluntary sector partners all aimed at supporting residents, communities and businesses.
- These include:
 - LIFT platform
 - Warm Spaces
 - SME support
 - Warm Packs
 - Energy Advice
 - Work match money management training
 - Funding for the VCS to offer benefits advice
- It also funded last year's Warm Spaces and Food Grant, supporting 13 VCS run projects



Case study 1: Mortlake Warm Soup Club

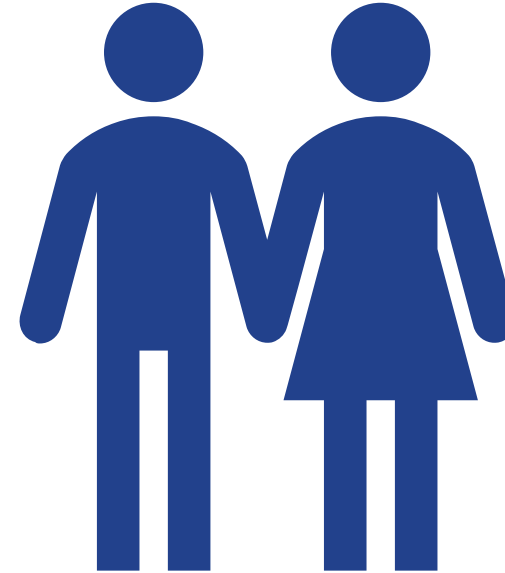
- John (31) referred by RUILS. He is a wheelchair user, with the use of one hand, has MS and substance abuse issues. English is not his first language.
- RUILS took John to the club for six weeks. It was agreed that an English tutor, arranged by RUILS, could provide lessons for John at the Warm Soup Club.
- John was connected at the club to his local ward councillor, who has helped him to get his garden and kitchen adapted, help with debt management and with his care package.

Case study 1: Mortlake Warm Soup Club

- John now goes himself to the Warm Soup Club every week, where he has made friends. He knows where to go for support and friendship.
- He has not smoked weed since September, he says he is too busy with his new friends and planning a BBQ with them in his garden.
- *'I can see the difference in his personality, when I met John he was very negative and felt everyone was against him, now if I see him at the club he is always happy.'*

Case study 2: Citizens Advice Richmond

- An older couple approached Citizens Advice Richmond. Their only income was a pension of £230 per month. Although they owned their home, they were struggling to pay their bills on such a low income.
- The Cost of Living outreach worker checked with them if they were claiming everything they are entitled to. They assisted the couple to make a claim for Pension Credit. They have now been awarded £255 per week, meaning that their household income has increased by £1,105 per month.



What do we need to do now?

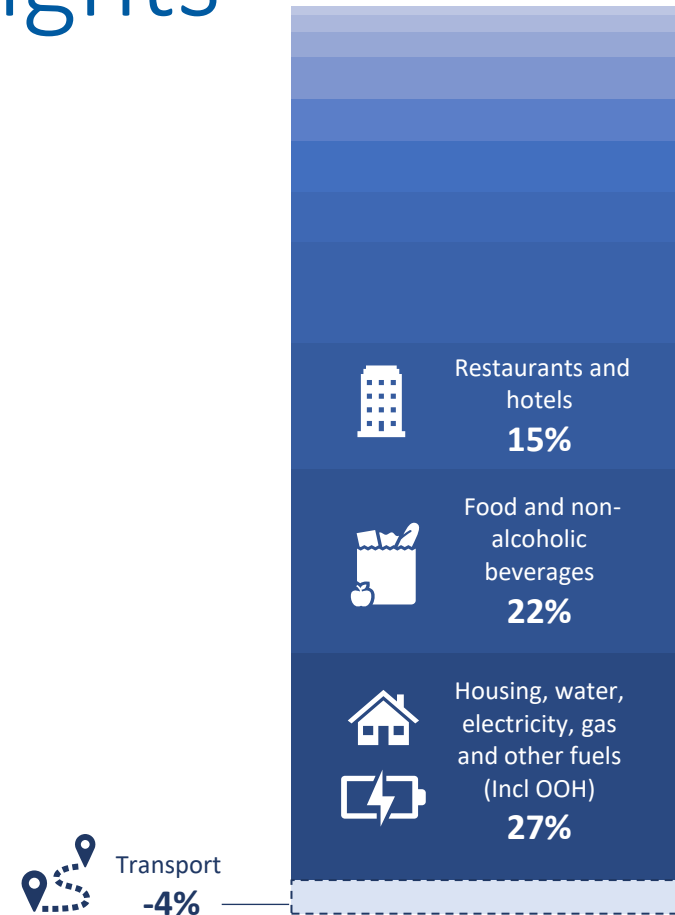
- Cost of Living Crisis is not going away
- Working up some larger projects which aim to:
 - Build in longer term resilience, not just crisis support
 - Develop solutions with the voluntary sector
 - Put support where residents are – i.e. more outreach, co-location of support services in community buildings
- Cost of Living Grant Fund for VCS
- Need to continue hearing from **you**



Latest data and insights

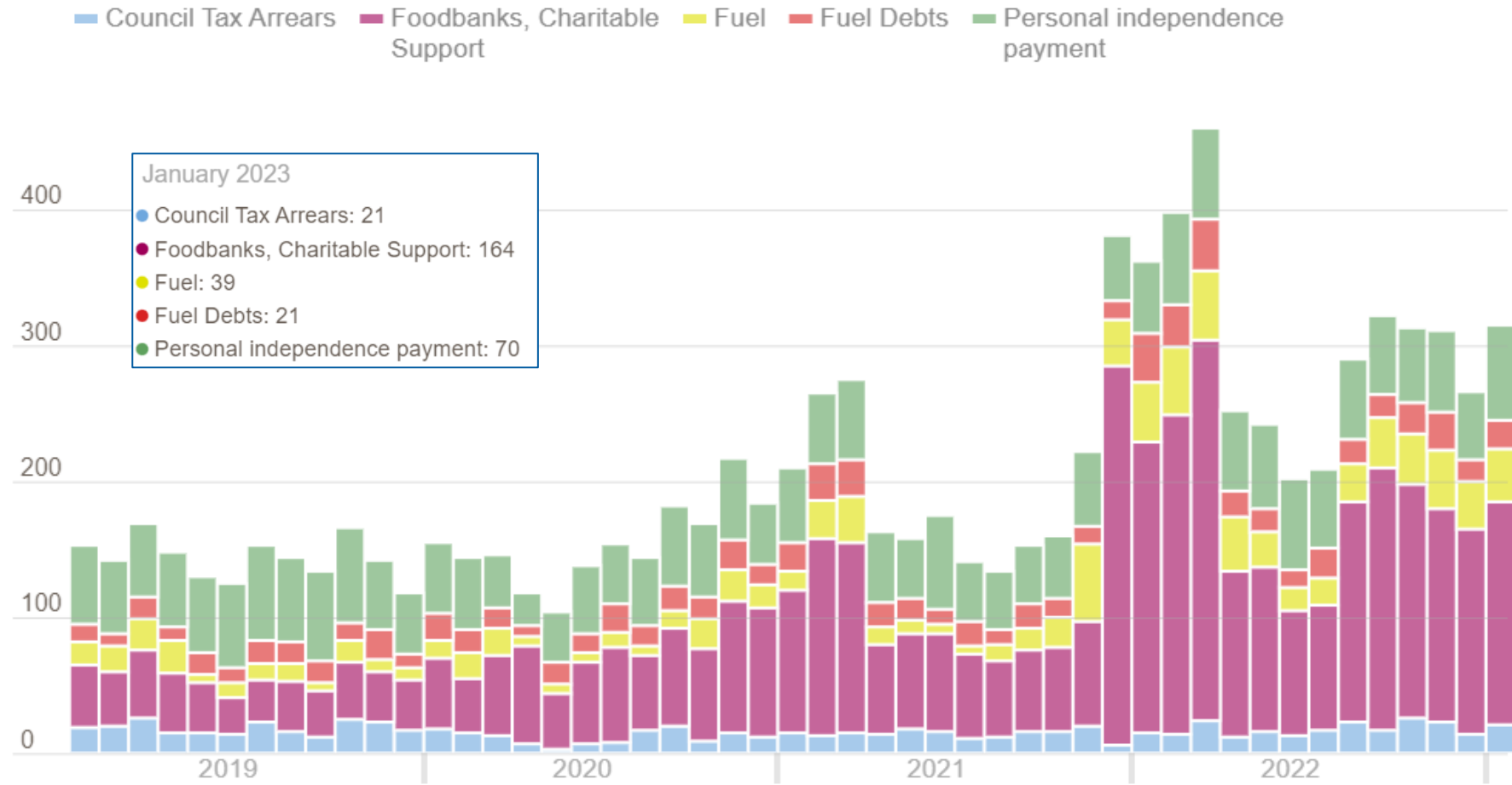
Contribution to CPIH percentage change over
12 months to July 2023 (ONS, 2023)

- Food costs remain stubbornly high and alongside household outgoings (including rental and mortgage costs) contribute the largest Cost of Living pressures. At the same time, transport costs have fallen and energy prices have come down due to the lowering of the Ofgem energy price cap, however these are still higher than pre-pandemic levels.
- Cost of Living pressures have maintained large numbers of Citizens Advice referrals for foodbanks and charitable support in Richmond into 2023.



Top five cost of living issues

Time series for Richmond



Citizens Advice



Latest data and insights

- London rents continue to increase at a higher rate than the rest of the UK and average asking rents for properties new to the market are increasing at the highest rate in Outer London (+13.9% in the year to June 2023). There are an estimated 2,600 low-income, private renting households in Richmond.
- Richmond has an unusually high proportion of households owned with a mortgage for a London borough. Homes in Richmond are some of the least affordable across the capital when compared to resident salaries. So, with more than half of mortgages coming up for renewal in 2023 being fixed at a rate below 2%, some will struggle with the now higher interest rates and resulting 50%+ increase to their mortgage repayments. There are an estimated 1,000 low-income households with mortgages in Richmond.



Phase 2 major projects

- Integrate LIFT into day to day service delivery and run campaigns using LIFT to increase benefit take up.
- Development of Warm Spaces into Community Spaces with additional support across spaces (e.g. Energy Advice, Employment Support, Housing Advice).
- Pilot a Money Hub approach working intensively with a cohort of households identified via the Low Income Family Tracker (LIFT). Money hubs bring together officers from various specialisms to provide holistic support to households.
- Develop our approach to supporting food aid/trade in the borough, working with the VCS to scope out potential for social supermarket/community larder approaches.

Cost of Living Workshop

- A workshop focusing on the ongoing impact of the Cost of Living crisis and how we can continue to work together to support our residents and build in longer term resilience and solutions
- All VCS partners are welcome
- 16th October 2023, 10am – 12pm
- Clarendon Hall, York House, Twickenham, TW1 3AA
- Sign-ups due to open shortly



Cost of Living Workshop

- What do you think it would be useful for us to focus on at that session?
- What issues do you feel are most pressing?
- Are there specific areas you would benefit from support on that haven't been covered so far?





Thank you

bethany.pepper@richmondandwandsworth.gov.uk

Council Grant Funding

Cost of Living Grant Fund

Civic Pride Fund

Active Richmond Fund

Community Fund

Rajiv Bhattacharjee

Community Engagement Manager
Richmond Council

Clarinda Chan

Community Grants Officer
Richmond Council

Cost of Living Grant Fund

Aim: To support **voluntary sector organisations** in their work to **help residents through the cost of living crisis**



£ 5,000
to
£ 20,000



Not for profit
Registered charities,
CIOs, CICs
3 years' operation
3 Directors/Trustees



Richmond
upon
Thames



Apply by:
29 Sept / 26 Feb

Decisions:
Early Nov/Early Apr

Cost of Living Grant Fund

Priority
1

Community spaces

Keep warm

Access to other activities or services

Priority
2

Food provision

Access to affordable food

Individuals
Vulnerable groups in targeted settings

Priority
3

Services that help local people affected by the Cost of Living crisis

e.g. advice services and activities that help people affected by the COL

Monitoring and evaluation

- Minimum of quarterly project updates
- Real time activity data within 5 working days
- End of project report

Project update

Summary

Numbers of Richmond residents supported

Demographic data

Case studies

Feedback

Cost of Living Grant Fund

	Apply by	Decision
First round	29 September 2023	Early November
Second round	26 February 2024	Early April

Application form available on Council website: https://richmond.gov.uk/cost_of_living_grant_fund

Submit application with supporting documents **by email**

Please **read guidance notes carefully** and get in touch with any questions:

Clarinda Chan, Community Grants Officer clarinda.chan@richmondandwandsworth.gov.uk

Civic Pride Fund

The fund aims to support local initiatives which meet one of the priority areas:

1. Building capacity in our community
2. A borough to be proud of
3. Town and Neighbourhood Centre Initiatives
4. Sport Initiatives

Constituted organisations can apply for up to **£5,000**
Individuals and informal groups can apply for up to **£1,000**

Apply anytime: www.richmond.gov.uk/civic_pride_fund

Outcome 8-10 weeks*

** This process can take longer if additional information is required to enable us to complete the assessment*

Active Richmond Fund

Aim: to support local groups and organisations to **provide an extended range of activities that enriches the Social Prescribing or Cultural offer**, promoting an **active lifestyle** for borough residents

Priority
1

**Physical
Activities**

Priority
2

**Healthy Eating
and Nutrition**

Micro Grants – up to £1,000

Main Grants – up to £5,000



Who can apply?

- Registered Charities
- Voluntary groups
- Sports associations
- Social enterprises
- Individual providers

What do we fund?

- Revenue or capital expenditure
- Services or activities that benefit **residents of Richmond**
- Activities for **adults (Age 18+)**, or intergenerational activities



How to apply?

Download the application form: www.richmond.gov.uk/active_richmond_fund

Submit completed application: ActiveRichmondFund@richmond.gov.uk

Micro Grants – outcome 6 weeks*

Main Grants – outcome 10 weeks*

Rolling Programme – Apply Now



Project examples:

- Fitness equipment
- Fitness sessions (e.g. yoga, Pilates, spin)
- Outdoor projects (e.g. community gardens)
- Healthy cooking classes
- Sports activities

* This process can take longer if additional information is required to enable us to complete the assessment

Community Fund

Neighbourhood Community Infrastructure Levy

September 2023



What is Neighbourhood CIL?

- 15% proportion of levy receipts to be spent on priorities agreed with local community in areas where development is taking place.
- 25% in areas where a Neighbourhood Plan is formally adopted.
i.e. Ham and Petersham

National Regulations stipulate that funding is used towards:

- The provision, improvement, replacement, operation or maintenance of infrastructure; or
- Anything else that is concerned with addressing the demands that development places on an area

Funding Available in Round 5

East of the Borough £ 518,000

- *Richmond, Kew, East Sheen, Mortlake, Barnes*

West of the Borough £ 351,000

- *Whitton and Heathfield, Twickenham, East Twickenham and St Margarets, Hampton, Hampton Hill and Fulwell, Strawberry Hill, Teddington and Hampton Wick*

Ham and Petersham £ 4,600 *

*This will be carried forward to the next round as it is below the minimum threshold for the Community Fund

What projects can be funded?

Projects need to be infrastructure based aimed at relieving the demands placed on a local area by new development.

Physical infrastructure

For Example:

- Improvements to community buildings
- Street scene improvements to allow areas to be better used
- Contributing to borough greening initiatives
- Making environments more accessible and Disability Discrimination Act compliant
- Improvements to wildlife habitat and environmental initiatives
- Increasing the variety of play & fitness equipment
- Supply and installation of bike racks/storage/cycle routes

What
projects
can be
funded?

Social Infrastructure

Local services and facilities that contribute to the quality of life

For Example:

- Projects that use digital solutions to include more vulnerable or marginalised residents
- Provision of community facilities and equipment
- Outreach provision to support more isolated members of the community

What projects cannot be funded?

- Political or religious orientated projects
- Projects that would be totally reliant on further funding from the Community Fund to continue e.g. need to show sustainability
- Staff posts, unless it is time limited for the exclusive delivery of the project e.g. trainer for volunteers
- Professional fees to prepare application
- Feasibility studies
- Retrospectively; the project must be adding additional value to mitigate the impact of development in the area.



Examples of Successful Projects in the East of the Borough

East of the Borough

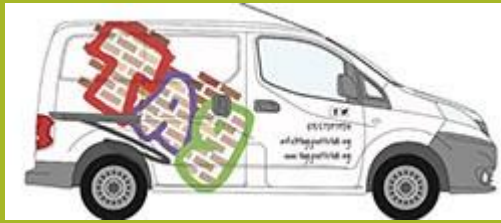
- Richmond Town Centre Improvements, Richmond BID
- Suffolk Road Rec. play equipment, Friends of Suffolk Rd Rec
- OSO Accessible toilets
- Richmond Gymnastics Club, Gym extension
- Vineyard Community Centre, disability access improvements
- Kew Neighbourhood Association Digitisation
- Mortlake Powerstation, audio equipment

Examples of Successful Projects in the West of the Borough

West of the Borough

- ETNA Community Centre, Community Kitchen extension and garden
- Marble Hill Playcentres, accessible toilet and kitchen
- Heatham House, skatepark rebuild
- Kneller Gardens Pavilion Extension
- Heathfield Rec. Muga upgrade
- Hampton Pools, cycle storage
- Sheddington, DIY Project premises





Examples of Successful Projects in Ham and Petersham

- TAG Youth Project, outreach van
- St Andrew's Church, hall upgrade
- Petersham and Ham Sea Scouts, hall rebuild
- Grey Court School, Community changing rooms

Process and Timeframes

Timeline for Round 5:

Deadline:

Monday 11th Dec 2023

Applicant workshops:

Monday 18th Sept 2-4pm York House

Weds 11th Oct 6-7.30pm ONLINE

Delivered in partnership with RCVS

Decision timetable:

2nd Jan – 31st Jan 2024: Community
Engagement due diligence period/technical
reports from officers

Feb 2024: Community Fund Grant Board
evaluation scoring/validation of applications

April 2024: Applicants notified of result

Contact us:

Cost of Living Fund: www.richmond.gov.uk/cost_of_living_grant_fund

Civic Pride Fund: www.richmond.gov.uk/civic_pride_fund

Active Richmond Fund: www.richmond.gov.uk/active_richmond_fund

Clarinda Chan (Community Grants Officer)

T: 020 8487 5112 E: clarinda.chan@richmondandwandsworth.gov.uk

Community Fund: www.richmond.gov.uk/community_fund

Genesis Adeleye (Community Engagement Officer)

T: 020 8487 5385 E: genesis.adeleye@richmondandwandsworth.gov.uk

Siobhan Oktay (Community Engagement Officer)

T: 020 8831 6351 E: Siobhan.Oktay@richmondandwandsworth.gov.uk



Community Conversation

Questions?



South West London Voluntary, Community and Social Enterprise Alliance

Sara Milocco
SWL VCSE Alliance Director



ICS and the voluntary sector

Integrated care systems (ICSs) are partnerships that bring together NHS organisations, local authorities and others to take collective responsibility for planning services, improving health and reducing inequalities across geographical areas.

National guidance has set clear expectations that the voluntary sector should be involved within the governance structures of the ICS

Our system is South West London (Merton, Richmond, Wandsworth, Croydon, Sutton, Kingston)



The SWL VCSE Alliance wants to:

Be a link between local voluntary and community sector organisations and other partners within our ICS

Share valuable insight and information and promote shared learning and collaboration

Be a strategic partner within the ICS and support the transformation and care services for local people



The SWL VCSE Alliance:



The director attends the Integrated Care Partnership (ICP) meeting and the Integrated Care Board (ICB) for SWL with a SWL Healthwatch representative

Has a Leadership group leading

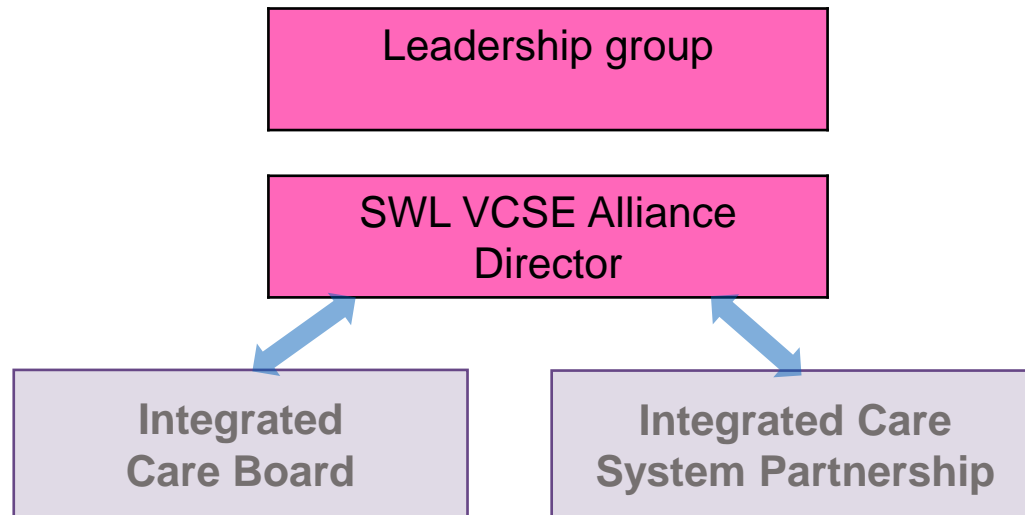
Will work on workstreams

Will have voluntary sector representatives sitting on SWL partnerships

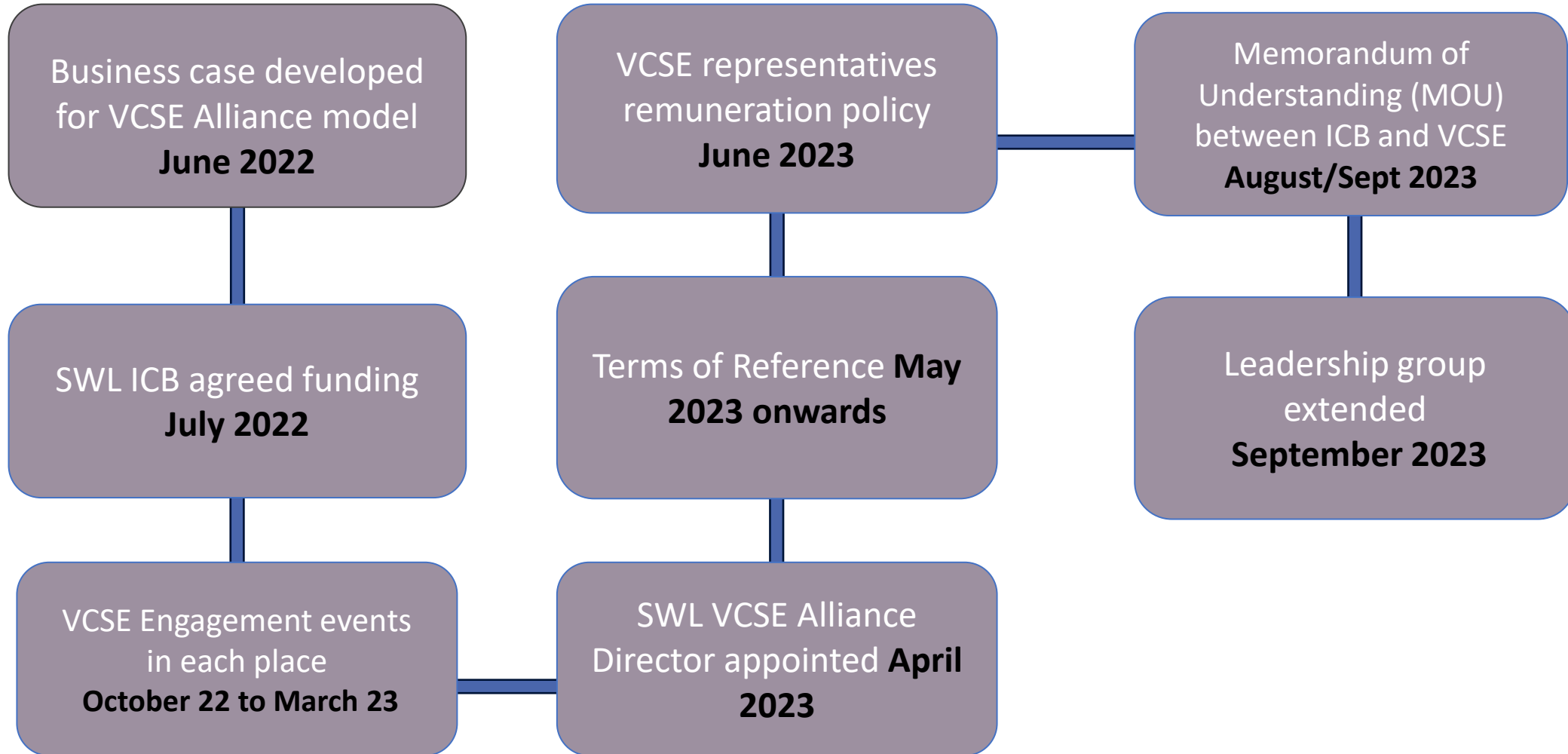


Building the SWL VCSE Alliance

SWL VCSE Alliance					
Croydon Voluntary Action	Kingston Voluntary Action	Merton Connected	Richmond Community Voluntary Sector	Community Action Sutton	Wandsworth Care Alliance
Frontline VCSE leader (Croydon)	Frontline VCSE leader (Kingston)	Frontline VCSE leader (Merton)	Frontline VCSE leader (Richmond)	Frontline VCSE leader (Sutton)	Frontline VCSE leader (Wandsworth)



SWL VCSE Alliance so far



Local directories



Croydon [Simply Connect Croydon](#) and themed flyers at [Directories - Croydon Voluntary Action \(cvalive.org.uk\)](#) - mental health, autism, homelessness.

Merton [Merton Connected](#) - will be soon refreshed

Richmond [VCConnect Online Directory - Search Results \(vcconnectsystem.org.uk\)](#)

Sutton [VCConnect Online Directory - Home Page \(vcconnectsystem.org.uk\)](#)

Kingston upon Thames [Connected Kingston](#)

Wandsworth Care Alliance [Care4me | your community directory](#)



Local CVSs (infrastructure organisations)



Croydon [Croydon Voluntary Action](#) (also BME Forum, Asian Resource Centre Croydon, CNCA)

Merton [Merton Connected](#)

Richmond [Richmond CVS](#)

Sutton [Community Action Sutton](#)

Kingston upon Thames [Kingston Voluntary Action](#)

Wandsworth [Wandsworth Care Alliance](#) also Wandsworth Community Empowerment Network



Thank you

sara.milocco@cvalive.org.uk

07540 720 103



Questions?





Richmond as a Borough of Sanctuary

Helena McGinty – Head of Refugee Services, Richmond Council



Questions?



RCVS- UPDATE ON OUR AUTUMN OFFER

Julie Gavin - Capacity Building Manager,
Richmond CVS

FOCUS ON BOARDS

- Trustee recruitment evening Sept 20- FULL
 - [Add yourself to the waiting list](#)
 - Promote the event and positive messages about trusteeship

- Trustee Network- September 26
 - [The Importance of having a Financial Strategy-
BOOK](#)

TRAINING & EVENTS PROGRAMME

- [Work Smarter Not Harder – Sept 28](#)
- [DBS Checks & Safer Recruitment of Volunteers – October 10](#)
- [Emergency First Aid at Work- Oct 18](#)
- [Exploring Diversity Equity & Inclusion- Nov 1](#)

With more sessions TBC - view our full programme on [Eventbrite](#)



Health and Wellbeing Strategy and Full of Life Fair

Katherine Foreman – Communications Manager, Richmond
Council



Community Conversation

Open Forum and Q & A

